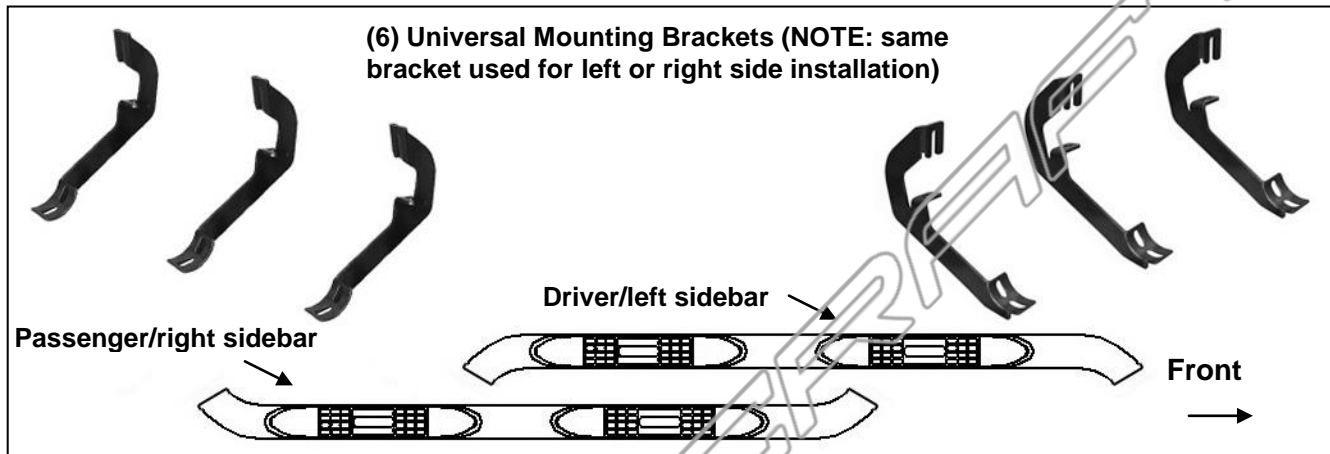


**4" OVAL BENT END SIDEBARS
ROCKER PANEL MOUNT**

2014 1500 SILVERADO/SIERRA DOUBLE (EXTENDED) CAB

PARTS LIST:

Qty	Description	Qty	Description
1	Driver/Left Sidebar	12	8-1.25mm Clip-On Nuts
1	Passenger/Right Sidebar	24	8-1.25mm x 25mm Hex Bolt
6	Brackets	24	8mm Lock Washers
		24	8mm x 24mm x 2mm Flat Washers



PROCEDURE:

REMOVE CONTENTS FROM BOX. VERIFY ALL PARTS ARE PRESENT. READ INSTALLATION INSTRUCTIONS CAREFULLY BEFORE STARTING INSTALLATION.

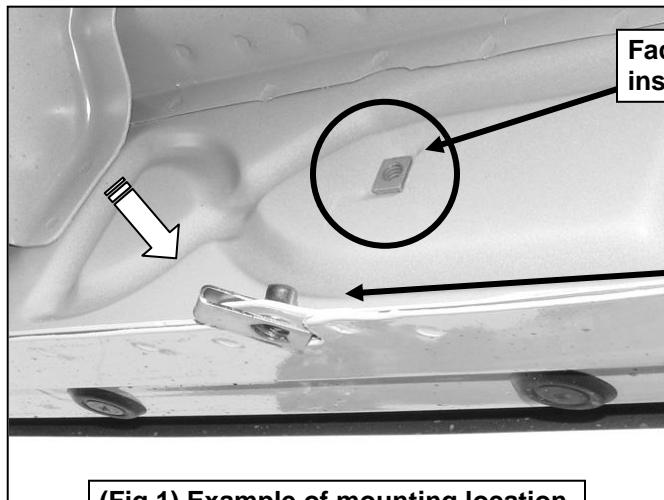
- Start the installation under the driver side of the vehicle. Locate the 1st, 2nd and 4th mounting tabs along the bottom edge of the body, **(Figure 1)**. If necessary, hold the driver side Sidebar up in place to help determine the correct mounting holes to use along the bottom of the body.
Vehicles with flat tab, no threaded hole: Select (1) 8mm Clip Nut. Slide the Clip Nut over the first tab with the nut facing up behind the tab, **(Figure 1)**. Line up threaded nut with hole in tab.
Vehicles with factory installed threaded insert in tab: Thread hex bolt into threaded insert from the backside-down to clear paint as required.
- Locate the inner mounting location on the back of the rocker panel directly above the flat tab in **Step 1**.
Vehicles without threaded hole: Remove the rubber plug from the larger hole, **(Figure 2)**. Select (1) 8mm Clip Nut. Slide the Clip Nut into the larger hole. Line up the threaded nut with the smaller hole, **(Figure 3)**.
Vehicles with factory installed threaded insert: Thread 8mm Hex Bolt into threaded insert to clear paint as required. Use a small amount of oil if necessary, **(Figure 1)**.
- Select (1) Mounting Bracket. **NOTE:** Brackets are universal and will fit left or right side. Bolt the Mounting Bracket to the Clip Nuts and/or the factory threaded holes with (2) 8mm Hex Bolts, (2) 8mm Lock Washers and (2) 8mm Flat Washers, **(Figure 4)**. Snug but do not fully tighten the hardware.
- Repeat **Steps 1 – 3** for all Bracket installations.
- Carefully position the Driver Sidebar onto the (3) Mounting Brackets. Attach the Sidebar to the Mounting Brackets with (6) 8mm x 25mm Hex Bolts, (6) 8mm Lock Washers and (6) 8mm Flat Washers, **(Figures 4)**. Do not tighten hardware at this time.
- Level and adjust the Sidebar and tighten all hardware.
- Repeat **Steps 2 – 6** for passenger Sidebar installation.
- Do periodic inspections to the installation to make sure that all hardware is secure and tight.

To protect your investment, wax this product after installing. Regular waxing is recommended to add a protective layer over the finish. Do not use any type of polish or wax that may contain abrasives that could damage the finish.

For stainless steel: Aluminum polish may be used to polish small scratches and scuffs on the finish. Mild soap may be used also to clean the Sidebar.

For gloss black finishes: Mild soap may be used to clean the Sidebar.

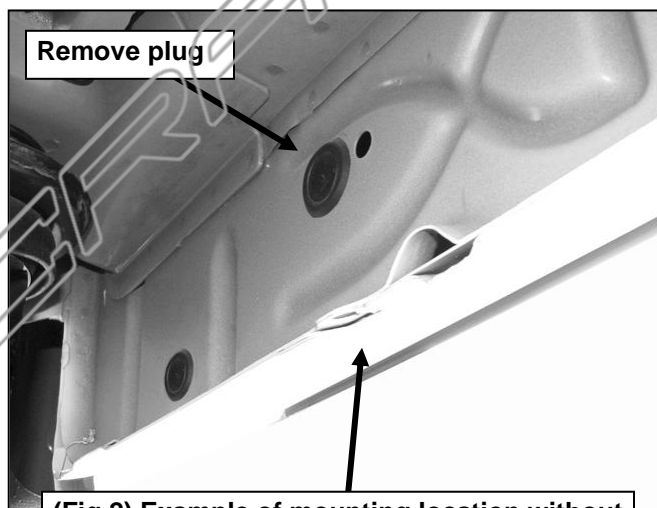
**4" OVAL BENT END SIDEBARS
ROCKER PANEL MOUNT
2014 1500 SILVERADO/SIERRA DOUBLE (EXTENDED) CAB
Driver Side Installation Pictured**



Factory 8mm threaded insert in body panel

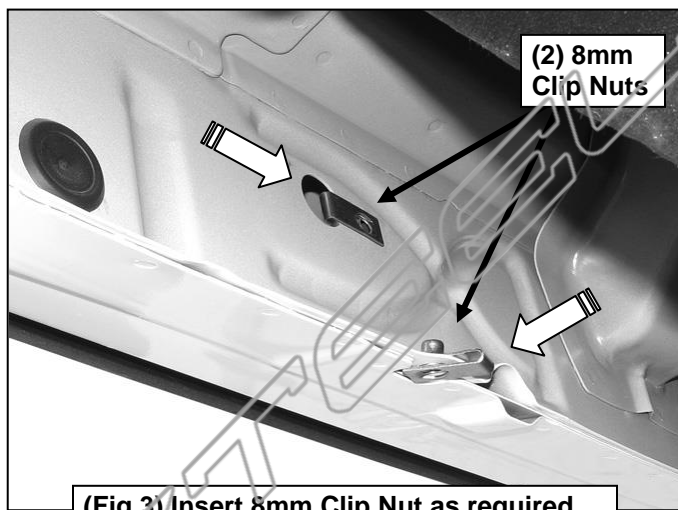
Use 8mm Clip Nut or factory threaded insert if equipped

(Fig 1) Example of mounting location with factory threaded hole



Remove plug

(Fig 2) Example of mounting location without factory threaded hole in rocker panel



(2) 8mm Clip Nuts

(Fig 3) Insert 8mm Clip Nut as required

(2) 8mm x 25mm Hex Bolts
(2) 8mm Lock Washers
(2) 8mm Flat Washers

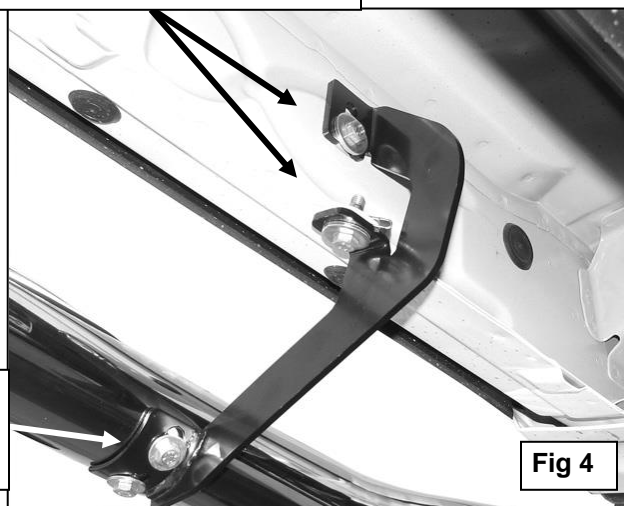


Fig 4

(2) 8mm x 25mm Hex Bolts
(2) 8mm Lock Washers
(2) 8mm Flat Washers