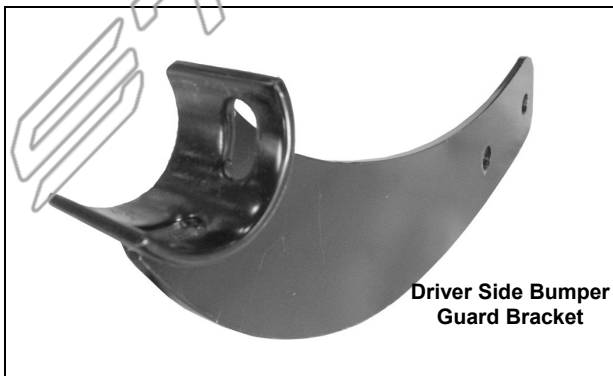


**INSTALLATION INSTRUCTIONS**  
**REAR BUMPER GUARD (Single Tube)**  
**07 TOYOTA RAV4**  
**PART #**

**PARTS LIST:**

1	Rear Bumper Guard	4	12-1.25mm x 45mm Hex Head Bolts
1	Driver/Left Frame Bracket	4	12-1.75mm x 30mm Hex Head Bolts
1	Passenger/Right Frame Bracket	4	12-1.75mm Nylock Nuts
1	Driver/Left Bumper Guard Bracket	4	12mm Lock Washers
1	Passenger/Right Bumper Guard Bracket	12	12mm ID x 29mm OD x 3mm Flat Washers
		4	8-1.25mm x 25mm Hex Head Bolts
		4	8mm Lock Washers
		4	8mm ID x 22mm OD x 1.5mm Flat Washers



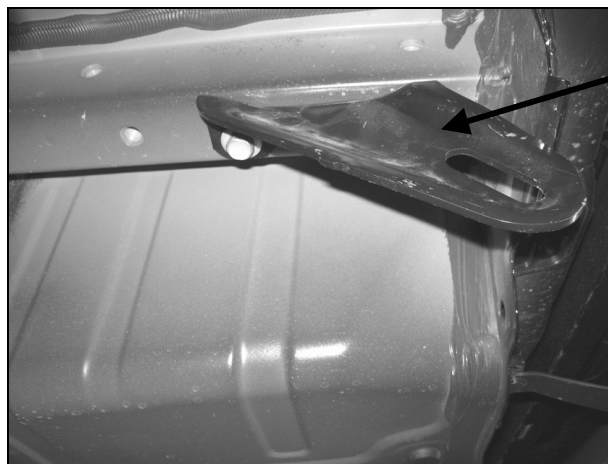
## PROCEDURE:

1. REMOVE CONTENTS FROM BOX. VERIFY ALL PARTS ARE PRESENT. READ INSTRUCTIONS CAREFULLY BEFORE STARTING INSTALLATION.
2. **IMPORTANT!** Due to the passenger side mounting location of the Frame Bracket being too close to the muffler, before starting the installation make sure the muffler is not hot.
3. Remove the factory tie down bracket located on the rear of driver side frame rail (**Figure 1**). You will not be re-installing it back onto the vehicle.
4. There are three threaded holes on the driver's side rear end of frame rail. Position Frame Bracket on the frame rail to line up with the two outside threaded holes on the frame rail (**Figure 2**).
5. Partially hang driver side Frame Bracket to frame rail using the included (2) 12-1.25mm x 45mm Hex Head Bolts, (2) 12mm lock Washers, and (2) 12mm Flat Washers (**Figure 4**).
6. Locate driver side Bumper Guard Bracket and attach it to the outer side of Frame Bracket already installed using the included (2) 12-1.75mm x 30mm Hex Head Bolts, (2) 12MM Nylock Nuts, and (4) 12mm Flat Washers (**Figure 5**). Do not tighten at this time. **NOTE:** Cradle on the Bumper Guard Bracket should be facing the inside of vehicle.
7. Repeat steps 4 – 6 for passenger side Brackets. **NOTE:** There are only two threaded holes on the passenger side frame rail (**Figure 3**).
8. Position Rear Bumper Guard onto Mounting Brackets. Attach Rear Bumper Guard to Mounting Brackets using the included (4) 8mm x 25mm Hex Head Bolts, (4) 8mm Lock Washers, and (4) 8mm Flat Washers (**Figure 6**).
9. Adjust Rear Bumper Guard properly; and then tighten all hardware at this time.
10. Do periodic inspections to the installation to make sure that all hardware is secure and tight.

**To protect your investment**, wax this product after installing. Regular waxing is recommended to add a protective layer over the finish. Do not use any type of polish or wax that may contain abrasives that could damage the finish.

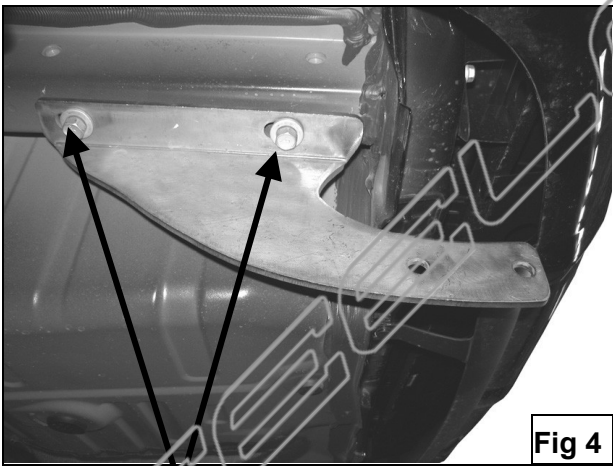
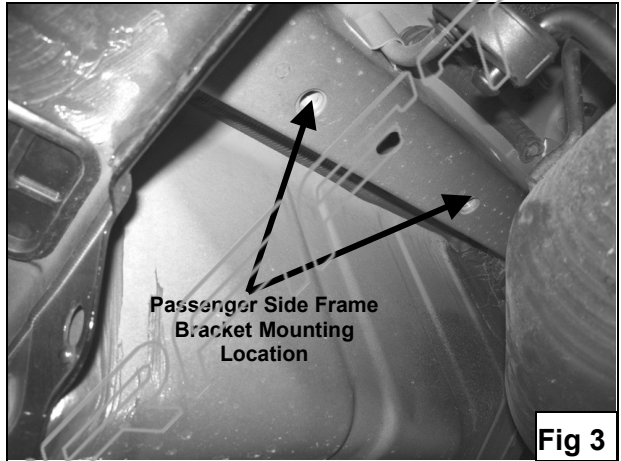
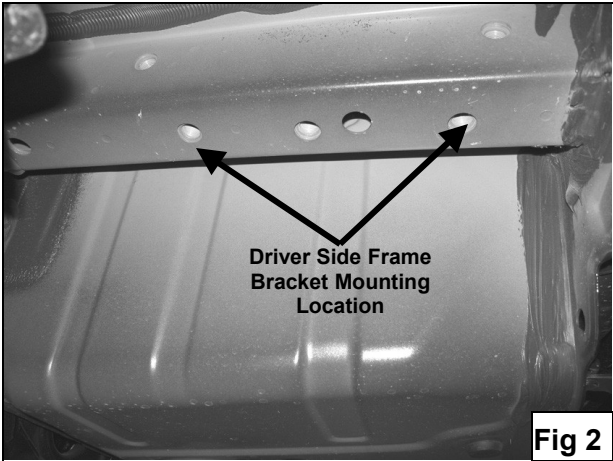
**For stainless steel:** Aluminum polish may be used to polish small scratches and scuffs on the finish. Mild soap may be used also to clean the Sidebar.

**For gloss black finishes:** Mild soap may be used to clean the Sidebar



Remove factory  
tie down

**Fig 1**



12-1.25mm x 45mm Hex Bolts  
12mm Lock Washers  
12mm Flat Washers



12-1.75mm x 30mm Hex Bolts  
12mm Nylock Nuts  
12mm Flat Washers



**Fig 6**

8mm x 25mm Hex Bolts  
8mm Lock Washers  
8mm Flat Washers

**Fig 7**

**Installation Complete**

STEELCRAFT