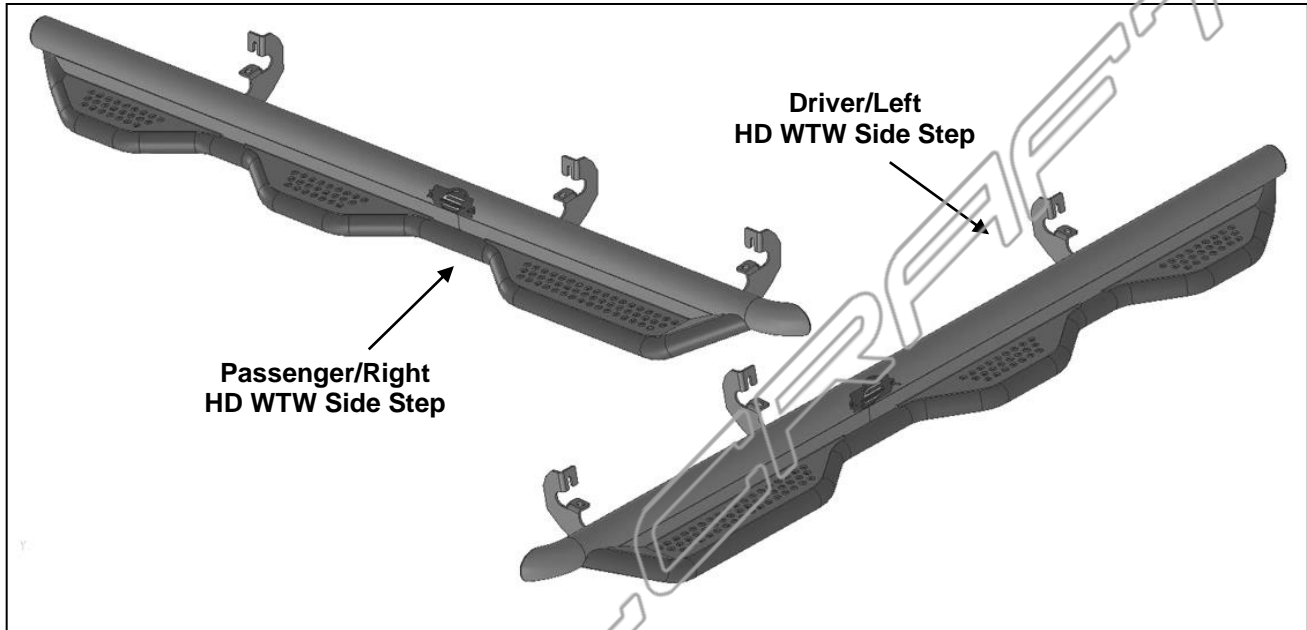


PARTS LIST:

1	Driver/Left HD WTW Side Step	12	8-1.25mm x 30mm Hex Bolts
1	Passenger/Right HD WTW Side Step	12	8mm Lock Washers
12	8-1.25mm Clip-on Nuts	12	8mm x 24mm x 2mm Flat Washers



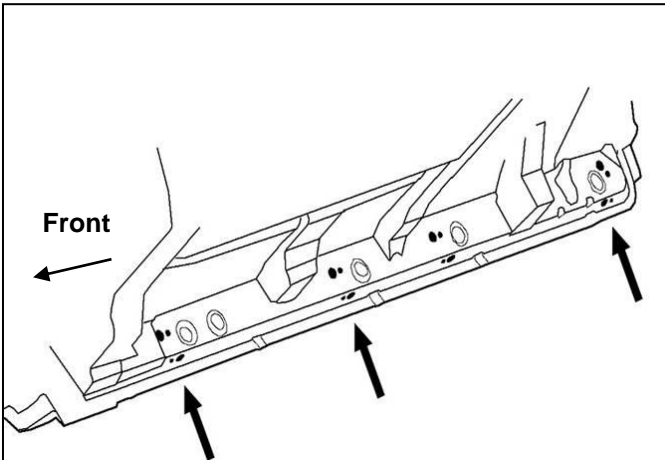
PROCEDURE:

**REMOVE CONTENTS FROM BOX. VERIFY ALL PARTS ARE PRESENT. READ INSTRUCTIONS CAREFULLY BEFORE STARTING INSTALLATION. ASSISTANCE IS RECOMMENDED.**

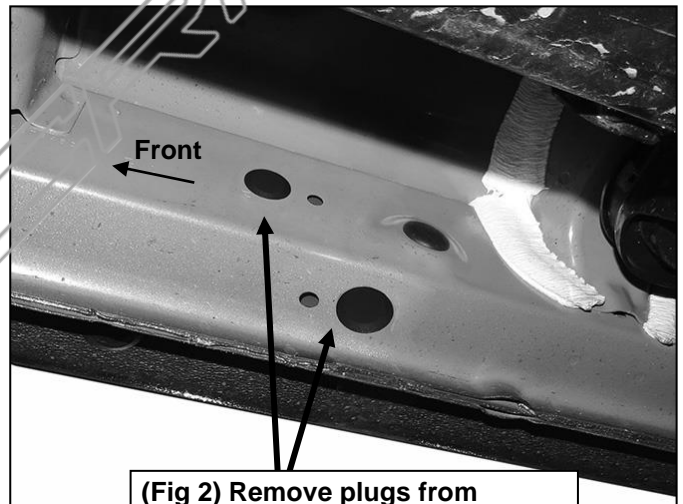
1. Start the installation under the passenger side of the vehicle. Locate the 4 factory running board mounting locations along the bottom and inner side of the body, **(Figure 1)**. **NOTE:** Installation will use the 1st, 2nd and 4th mounting locations. It may help to hold the Side Step up in place to help determine the mounting holes to use.
2. Remove rubber plugs as necessary, **(Figure 2)**. Select (2) 8mm Clip Nuts. Slide each Clip Nut into the large hole and over the smaller hole next to it. Line up threaded nut on the Clip Nut with smaller hole in body panel, **(Figure 3)**.
3. Move to the next mounting location along the body. Repeat **Steps 1 & 2** to install the Clip Nuts in the 2nd mounting location, **(Figure 1)**.
4. Next, locate the rear mounting location at the back of the cab, **(Figure 1)**. Repeat **Steps 1 & 2** to install the Clip Nuts in the last mounting location.
5. Select (1) Passenger side HD WTW Side Step. With assistance, attach the Brackets on the Side Step to the (6) Clip Nuts with (6) 8mm Hex Bolts, (6) 8mm Lock Washers and (6) 8mm Flat Washers, **(Figure 4)**. Snug but do not fully tighten the hardware.
6. Level and adjust the Side Step and fully tighten all hardware.
7. Repeat **Steps 1—6** to install the Driver/Left HD WTW Side Step.
8. Do periodic inspections to the installation to make sure that all hardware is secure and tight.

**To protect your investment**, wax this product after installing. Regular waxing is recommended to add a protective layer over the finish. Do not use any type of polish or wax that may contain abrasives that could damage the finish. Mild soap may be used also to clean the HD WTW Side Step.

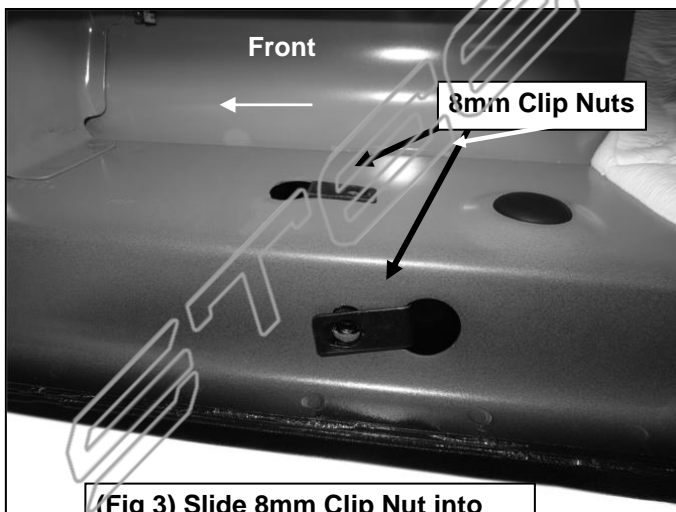
Passenger/Right Side Installation Pictured



(Fig 1) Passenger side mounting locations along bottom and back of body panel illustrated

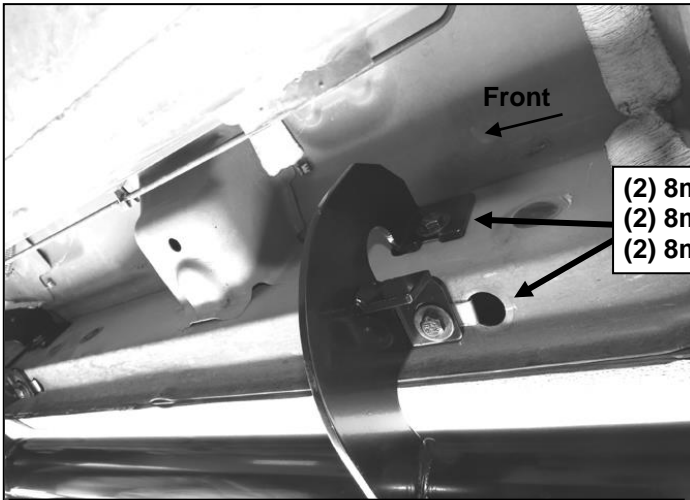


(Fig 2) Remove plugs from mounting locations as necessary



(Fig 3) Slide 8mm Clip Nut into large hole and over small hole

Passenger/Right Side Installation Pictured



(Fig 4) Passenger side HD WTW Side Step installed



Final Installation