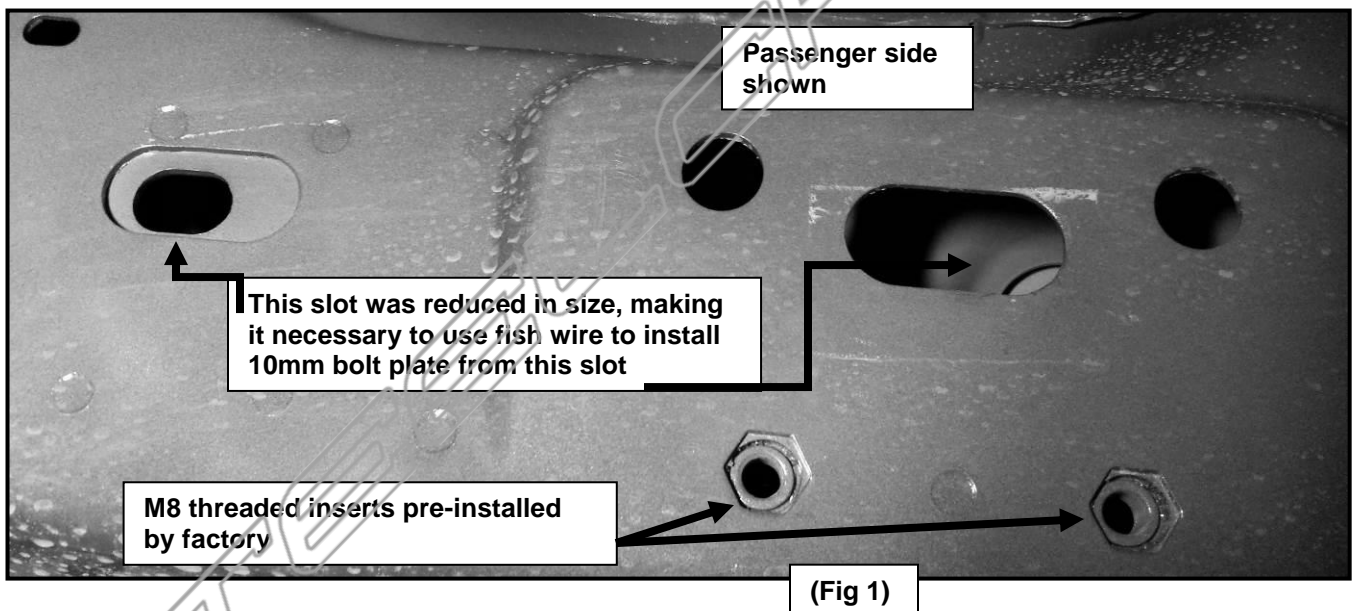


## RAM SUPPLEMENTAL INSTRUCTIONS FOR MODELS WITH PRODUCTION DATE OF May 2015 & UP

### ADDITIONAL PARTS LIST:

2	10mm x 30mm OD x 2.5mm flat washers	2	M10 bolt plate
2	10mm Lock Washers	1	M10 fish wire
2	10mm-1.50 Hex Nuts	2	10mm Plastic Retainer
4	M8-1.25 x 30mm hex bolt		
4	M8 lock washer		
4	M8 x 28mm x 3mm flat washer		

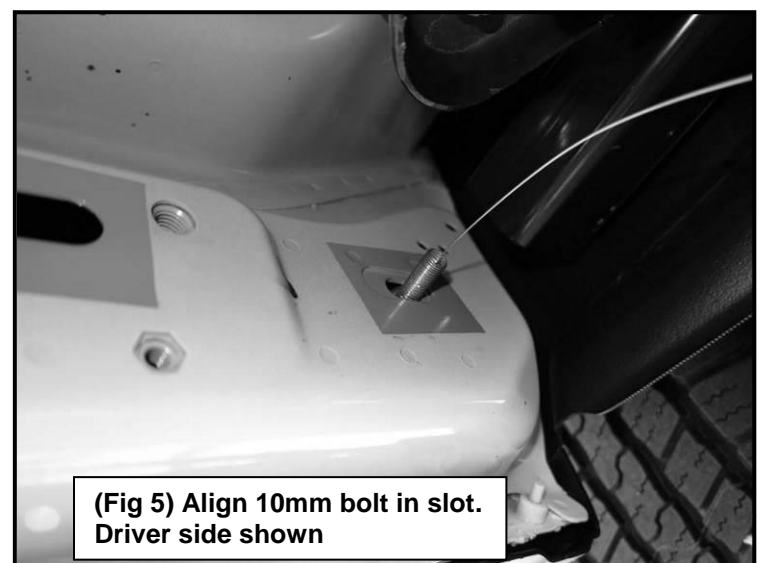
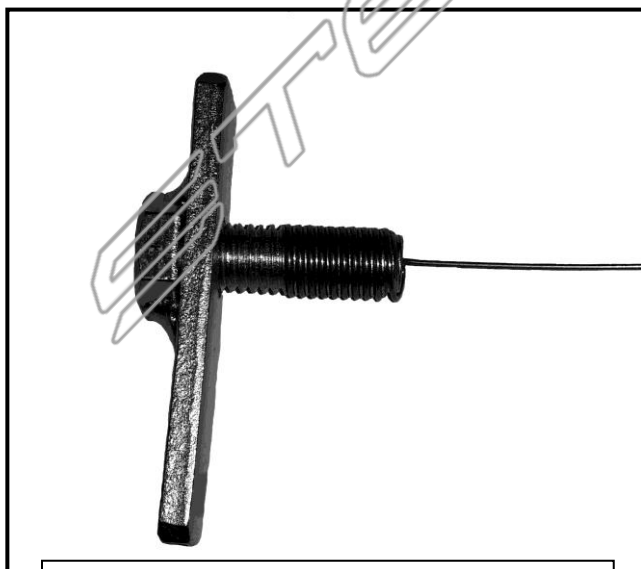
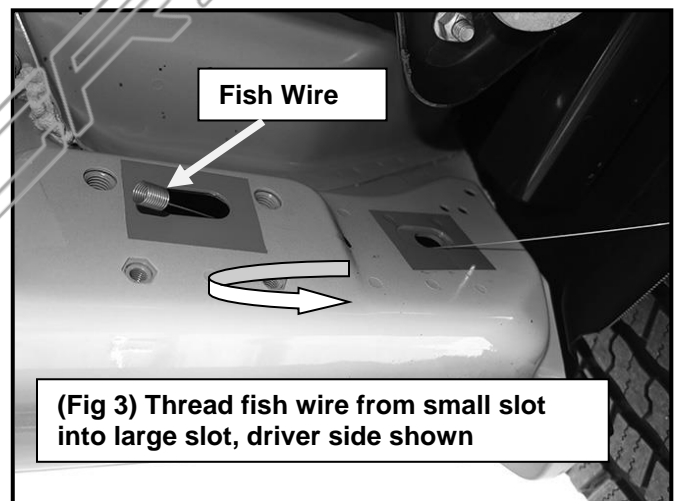
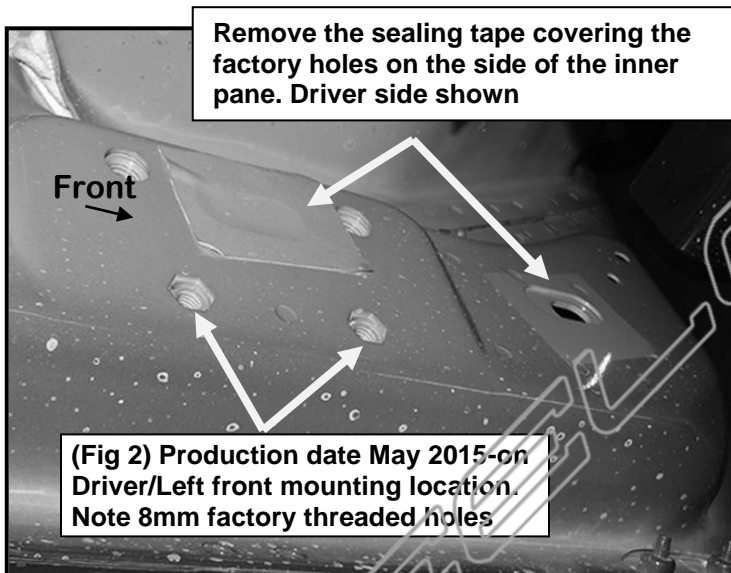
**NOTE:** Mid-Year 2015 Ram trucks were updated to include 8mm threaded inserts at front mounting location and possibly the rear location as well. In addition, one of the slots where the front bracket mounts, has been reduced in size. It will be necessary to use fish wire to install the 10mm bolt plate at these locations (Figure 1). Also, a new OE bracket has been added to the driver side front location on Ram 1500 models



### PROCEDURE:

1. REMOVE CONTENTS FROM BOX. VERIFY ALL PARTS ARE PRESENT. READ PRIMARY AND SUPPLEMENTAL INSTRUCTIONS CAREFULLY BEFORE STARTING INSTALLATION.
2. Starting at the driver side-front of the vehicle, remove the sealing tape covering the factory holes on the side of the inner panel, (Figures 2).
3. Insert fish wire into small slot and fish it until threaded end is present at large slot (Figure 3). Pull this end out slightly and thread 10mm bolt plate onto end of fish wire (Figure 4). Carefully feed bolt plate into rocker panel by pulling on opposite end of fish wire. Align 10mm bolt in slot and remove fish wire. Thread the 10mm plastic retainer down the bolt plate until it is flush against the sheet metal. (Figure 5)

- Next, place driver side front bracket over 10mm bolt plate and install (1) 10mm Flat Washer, (1) 10mm Lock Washer and (1) 10mm Hex Nut onto 10mm bolt plate, Do not tighten hardware at this time. **(Figure 6)**
- Line up the remaining hole in the Mounting Bracket with the factory threaded hole in the inner body panel. Attach the Bracket to the threaded hole with (1) 8mm x 30mm Hex Bolt, (1) 8mm Lock Washer and (1) 8mm Flat Washer, **(Figure 6)**. Snug but do not tighten hardware.
- For rear Mounting Bracket installation refer to primary instruction sheet. For vehicles equipped with pre-installed factory threaded inserts, substitute supplied 8mm hardware for 10mm hardware. The 12mm bolt/10mm nut plate will still be used, but the 10mm portion will not be used to attach bracket to vehicle.
- Repeat **Steps 2-6** for Passenger side mounting brackets
- Refer to primary instructions included in the bracket kit for rest of installation.**
- Do periodic inspections to the installation to make sure that all hardware is secure and tight.



2015-1/2 ON RAM TRUCKS ALL CABS  
3" ROUND & 4" OVAL 90 DEGREE BENT END SIDEBARS ONLY

