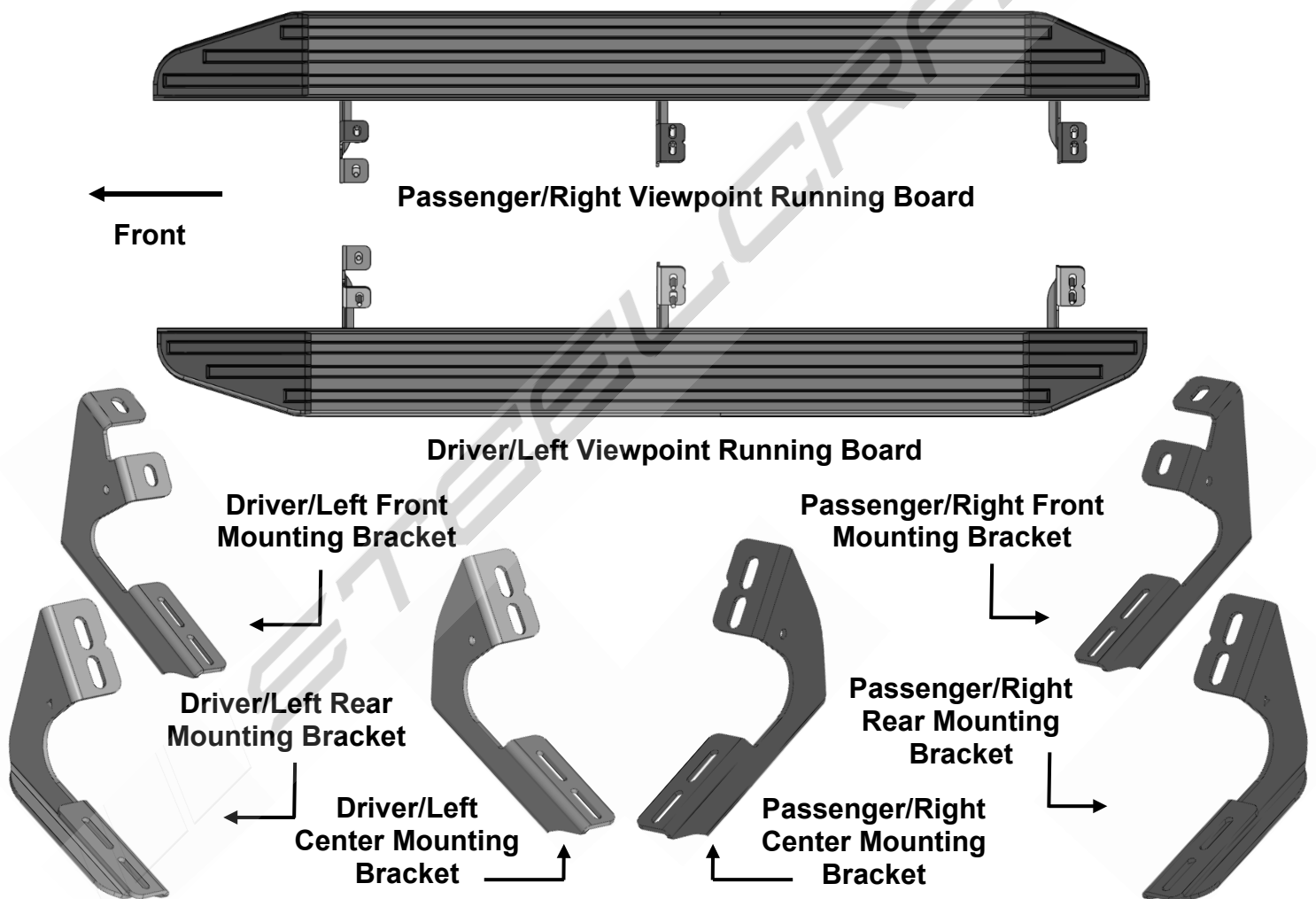


INSTALLATION INSTRUCTIONS

PARTS LIST:

Description	QTY		QTY
Driver/left Running Board	1	8-1.25mm x 30mm Hex Bolts	12
Passenger/right Running Board	1	6-1.0mm x 20mm T-Bolts	12
Driver/Left Front Mounting Bracket	1	6mm Hex Nuts	12
Passenger/Right Front Mounting Bracket	1	8mm x 24mm x 2mm Flat Washers	12
Driver/Left Center Mounting Bracket	1	6mm x 18mm x 1.6mm Flat Washers	12
Passenger/Right Center Mounting Bracket	1	8mm Lock Washers	12
Driver/Left Rear Mounting Bracket	1	6mm Lock Washers	12
Passenger/Right Rear Mounting Bracket	1		



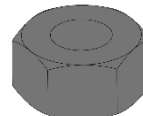
Lock Washer



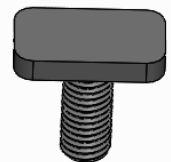
Flat Washer



Hex Bolt



Hex Nut



T-Bolt

TOOLS REQUIRED



Ratchet



10mm Socket
13mm Socket



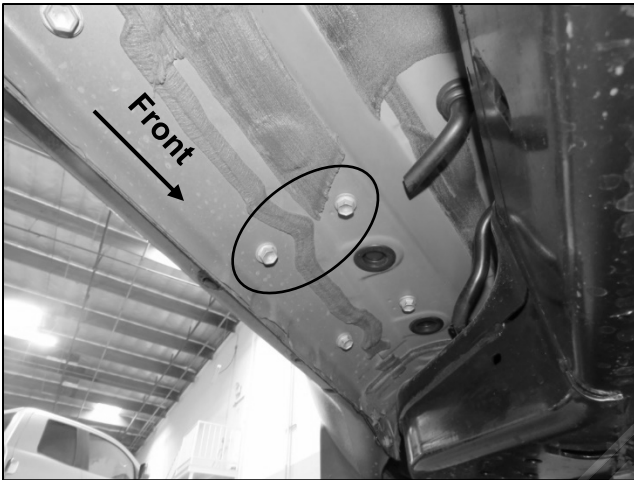
Extensions



21mm Wrench

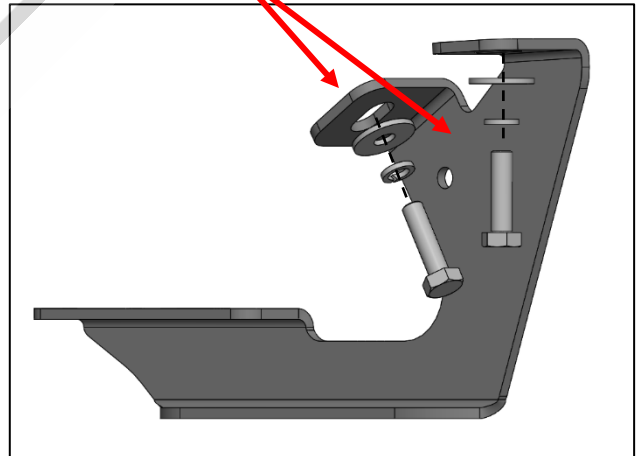
1

Follow (Fig 1 – 6) to install the mounting brackets to the vehicle. Driver/left installation pictured. Hand tighten only at this point.



(Fig 1) Locate the front mounting location circled and remove the OEM 8mm bolts.

(2) 8mm Hex Bolts
(2) 8mm Lock Washers
(2) 8mm Flat Washers



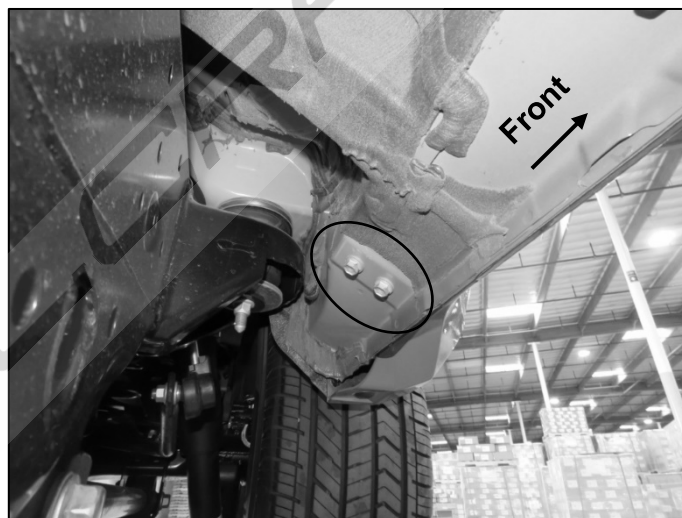
(Fig 2) Install the Front Mounting Bracket as depicted.



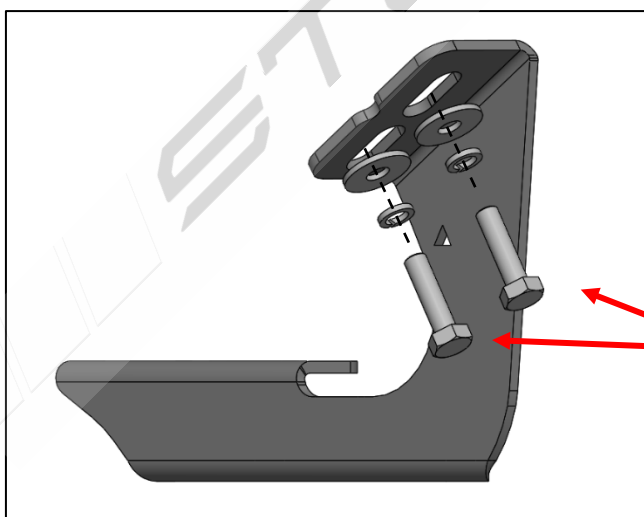
(Fig 3) The Front Mounting Bracket is installed.



(Fig 4) Locate the center mounting points circled and remove the OEM 8mm bolts.



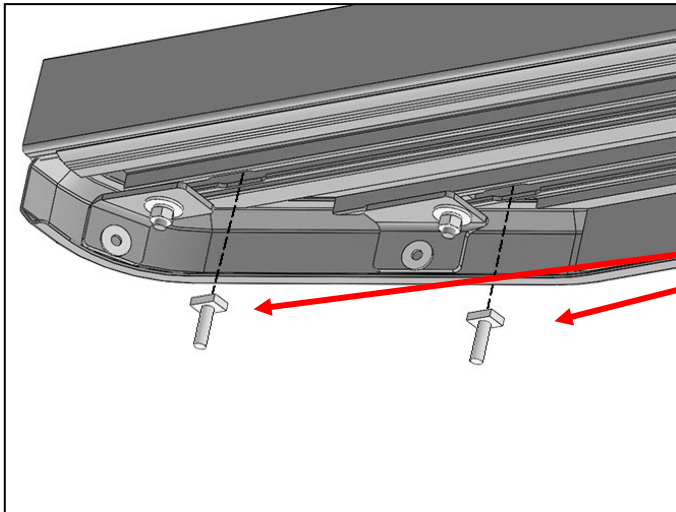
(Fig 5) Locate the rear mounting points circled and remove the OEM 8mm bolts.



- (2) 8mm Hex Bolts**
- (2) 8mm Lock Washers**
- (2) 8mm Flat Washers**

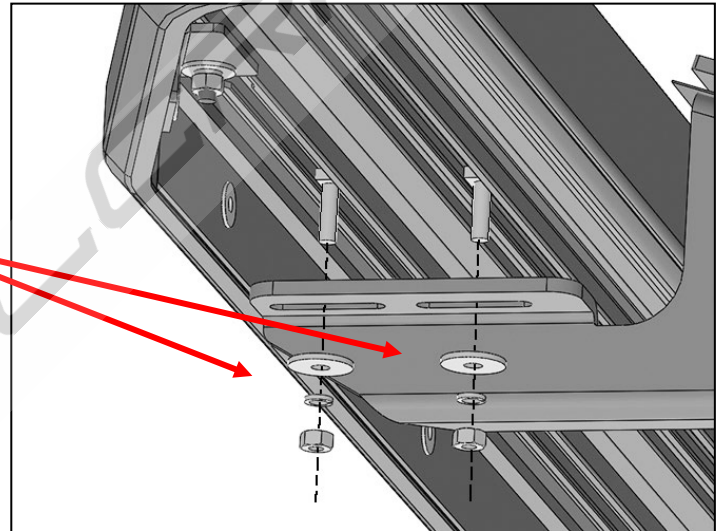
(Fig 6) Install the rear and center mounting brackets as depicted.

Follow (Fig 7 – 9) to install the Running Board to the Mounting Brackets.



(Fig 7) Slide the 8mm T-Bolts into the channels.

(2) 6mm Hex Nut
(2) 6mm Lock Washer
(2) 6mm Flat Washer



(Fig 8) Install the Running Board to the Mounting Brackets as shown.



(Fig 9) The Running Board is installed to the Mounting Brackets.

3

Installation is now complete. Adjust all mounting brackets to the preferred position, then tighten all hardware. Perform periodic inspections to the installation to make sure that all hardware is secure and tight.



Completed Installation