

**Installation Instructions**  
**Grille Guard #**  
**99-02 SILVERADO 1500LD/ 00-06 CHEVY**  
**TAHOE/SUBURBAN**

**DESCRIPTION**

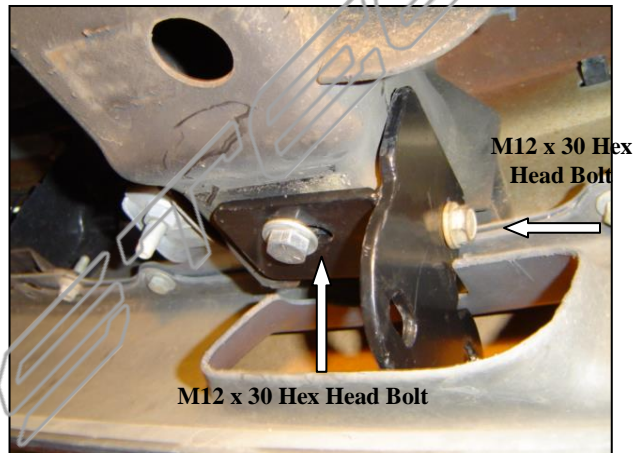
1	Front Guard
1	Lower Support Brackets-left
1	Lower Support Bracket-right
10	M12 x 30 Hex Bolt-zinc plated
10	M12 Lock Nut-zinc plated
20	M12 Flat washer-zinc plated

**Step One:** Remove the factory tow hooks from the vehicle if so equipped. If the vehicle did not come with the factory tow hooks it is necessary cut out the area of the lower valance where the hooks would have been.

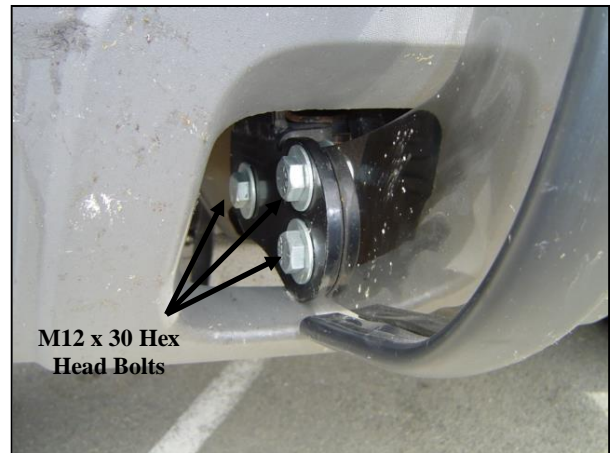
**Step Two:** Locate Left Lower Support Bracket, Two M12 x 30 Bolts, Two Lock Nuts, and Four Flat washers. Position Bracket under the frame. Loosely attach the Left Lower Support Bracket to frame using the hardware listed in this step (Figure 1). Repeat this procedure on the opposite side of vehicle.

**Step Three:** Locate the remaining M12 hardware and position the Front Guard to the inside of the Support Brackets. Attach the Guard to the Support Brackets using the hardware listed in this step (Figure 2). Maintain a 3/16" gap between the guard and the vehicle's bumper.

**Step Four:** After checking for proper clearance and alignment of the Front Guard on the vehicle fully tighten all hardware.



**Figure 1**



**Figure 2**