

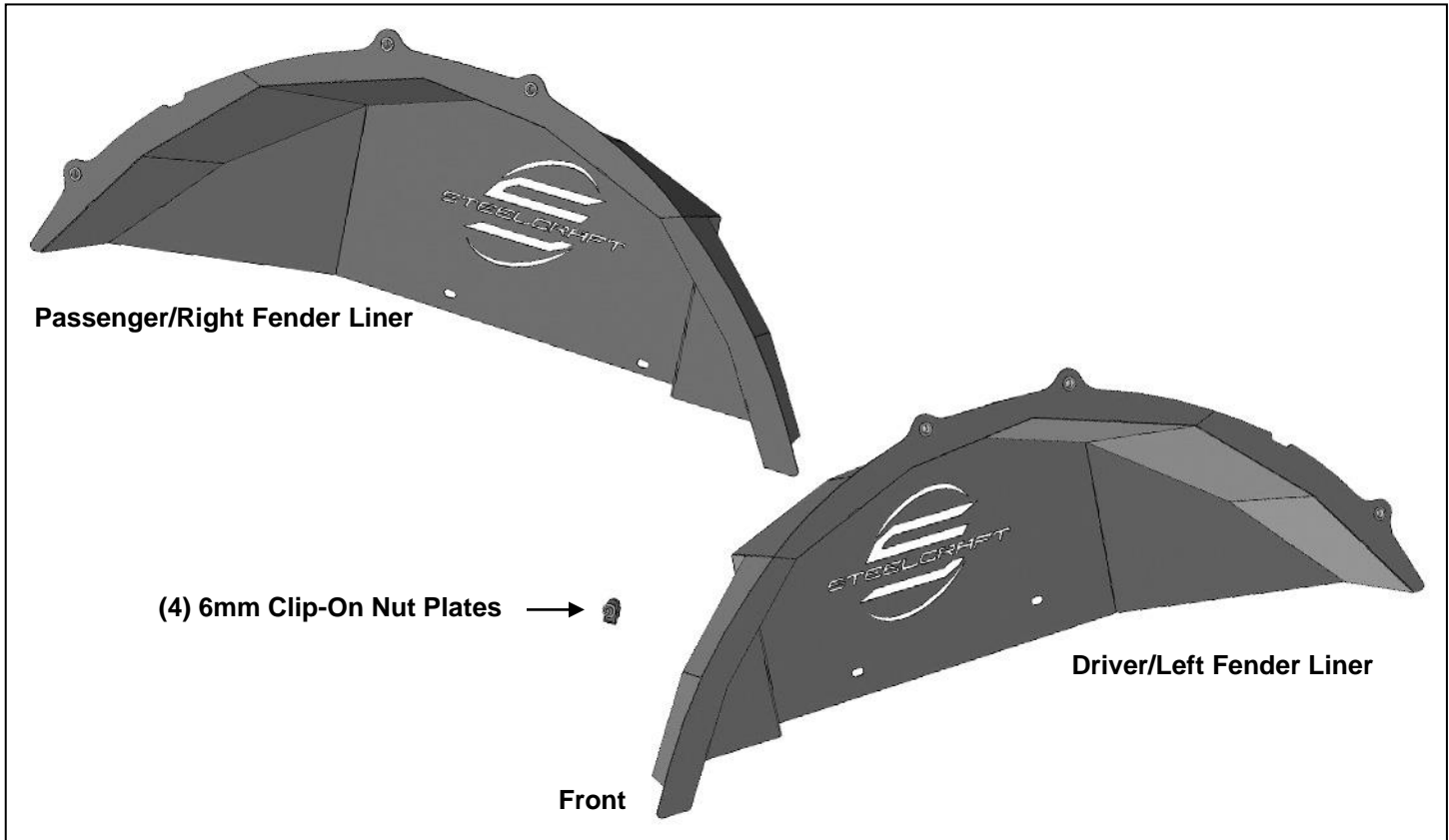
INSTALLATION INSTRUCTIONS

**PAIR STEELCRAFT REAR FENDER LINERS
2018-19 JEEP WRANGLER JL 4-DOOR**

**1PAIR STEELCRAFT REAR FENDER LINERS
2018-19 JEEP WRANGLER JL 4-DOOR**

PARTS LIST:

1	Driver/Left Rear Fender Liner	4	6-1.0mm Clip Nuts
1	Passenger/Right Rear Fender Liner	4	6-1.0mm x 20mm Button Head Combo Bolts
6	8-1.25mm x 30mm Button Head Bolts	1	5mm Wrench
6	8mm x 22mm x 2mm Flat Washers	1	4mm Wrench
6	8mm Lock Washers		



PROCEDURE:

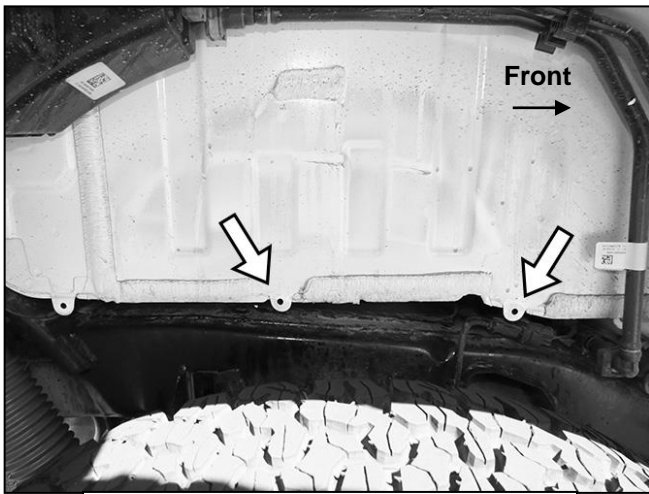
REMOVE CONTENTS FROM BOX. VERIFY ALL PARTS ARE PRESENT. READ INSTRUCTIONS CAREFULLY. ASSISTANCE IS RECOMMENDED.

1. Start installation on the passenger/right side of the vehicle. Locate the tabs along the bottom of the body above the frame, **(Figure 1)**. **NOTE:** The plastic fender liner attached to these tabs.
2. Select (2) 6mm Clip Nuts. Slide the Clip Nuts onto the (2) forward mounting tabs, **(Figure 2)**.
3. Select the passenger/right rear Fender Liner. Insert the Fender Liner into position up to the back of the inner body panel. **IMPORTANT:** If the vehicle has aftermarket fenders previously installed, it may be necessary to temporarily remove any hardware interfering with the Fender Liners. Depending on brand of fender, the replacement rear fender may attach to the same (2) top and the single rear mounting locations, **(Figure 3)**. **NOTE:** It may be easier to install the Fender Liner with the vehicle raised up and/or rear tire removed.
4. Attach the Fender Liner to the (2) top mounting locations with the included (2) 8mm Button Head Bolts, (2) 8mm Lock Washers and (2) 8mm Flat Washers, **(Figures 3 & 5)**. Leave hardware loose at this time
5. Attach the bottom of the Fender Liner to the (2) 6mm Clip Nuts with the included (2) 6mm Combo Bolts, **(Figures 4 & 5)**.
6. Line up the rear mounting hole with the hole in the body. Attach the Fender Liner to the rear location with (1) 8mm Button Head Bolt, (1) 8mm Lock Washer and (1) 8mm Flat Washer, **(Figures 3 & 5)**.
7. Align and adjust the Fender Liner. Fully tighten all hardware attaching the Fender Liner and fender.
8. Repeat **Steps 1—7** for driver/left side Fender Liner installation.
9. Do periodic inspections to the installation to make sure that all hardware is secure and tight.

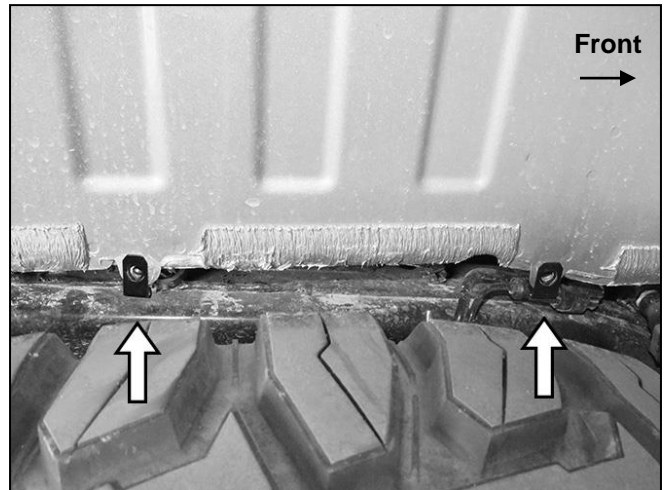
**1PAIR STEELCRAFT REAR FENDER LINERS
2018-19 JEEP WRANGLER JL 4-DOOR**

To protect your investment, Do not use any type of polish or wax that may contain abrasives that could damage the finish. Mild soap may be used to clean the Fender Liners.

Passenger/right Side Installation Pictured



(Fig 1) Locate mounting location on passenger/right tire opening (arrow)



(Fig 2) Slide Clip Nuts over mounting tabs on bottom of inner body panel (arrows-passenger/right side pictured)



(Fig 3) Fender Liner will attach to the (3) factory locations typically used to attach aftermarket fenders (arrows). Attach the Fender Liner to these mounting points, (passenger/right side pictured without fender for instruction purposes only)

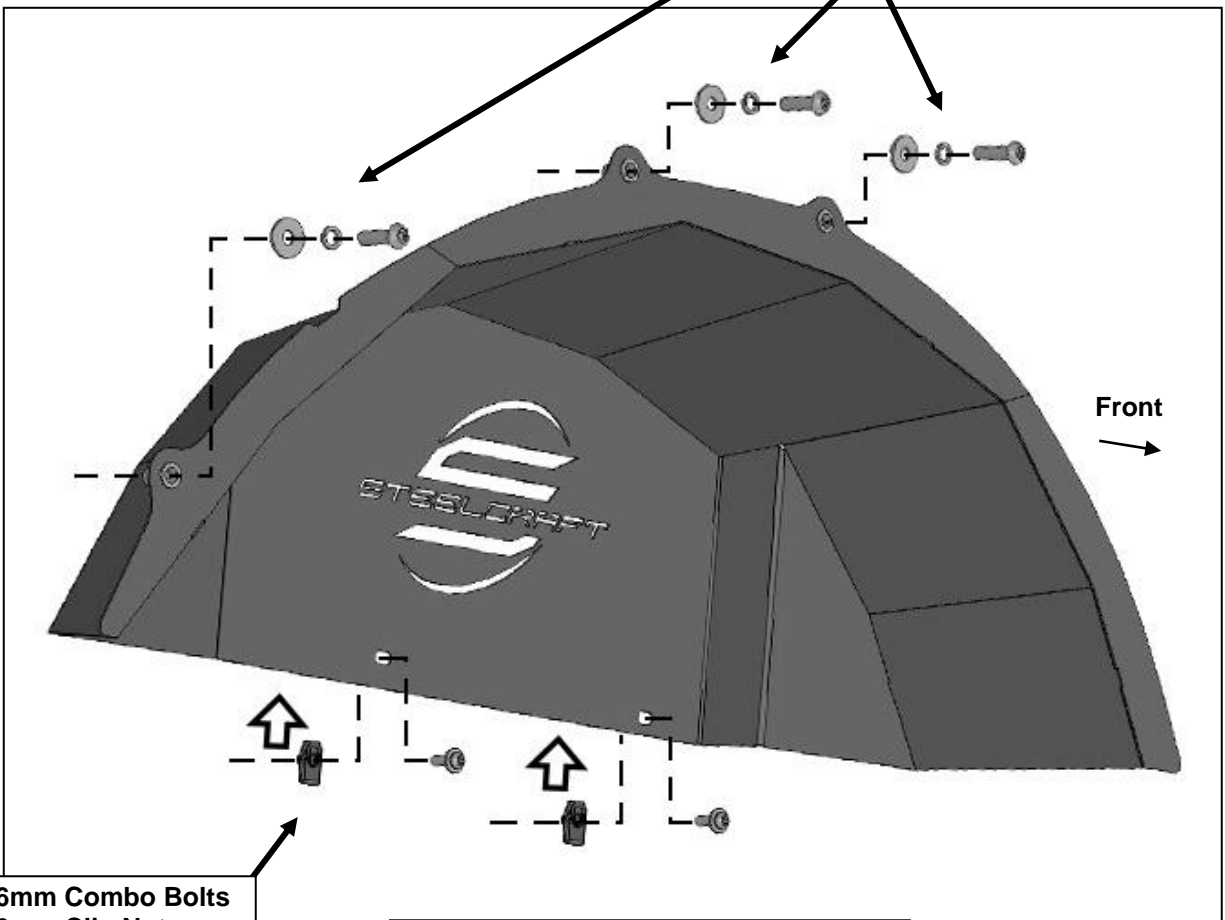
1PAIR STEELCRAFT REAR FENDER LINERS
2018-19 JEEP WRANGLER JL 4-DOOR

Passenger/right Side Installation Pictured



(Fig 4) Attach Fender Liner to the (2) 6mm Clip Nuts with the included (2) 6mm Combo Bolts (arrows)

- (3) 8mm x 30mm Button Head Bolts
- (3) 8mm Lock Washers
- (3) 8mm Flat Washers



- (2) 6mm Combo Bolts
- (2) 6mm Clip Nuts

(Fig 5) Locate top mounting locations on bottom of fender supports (arrows)