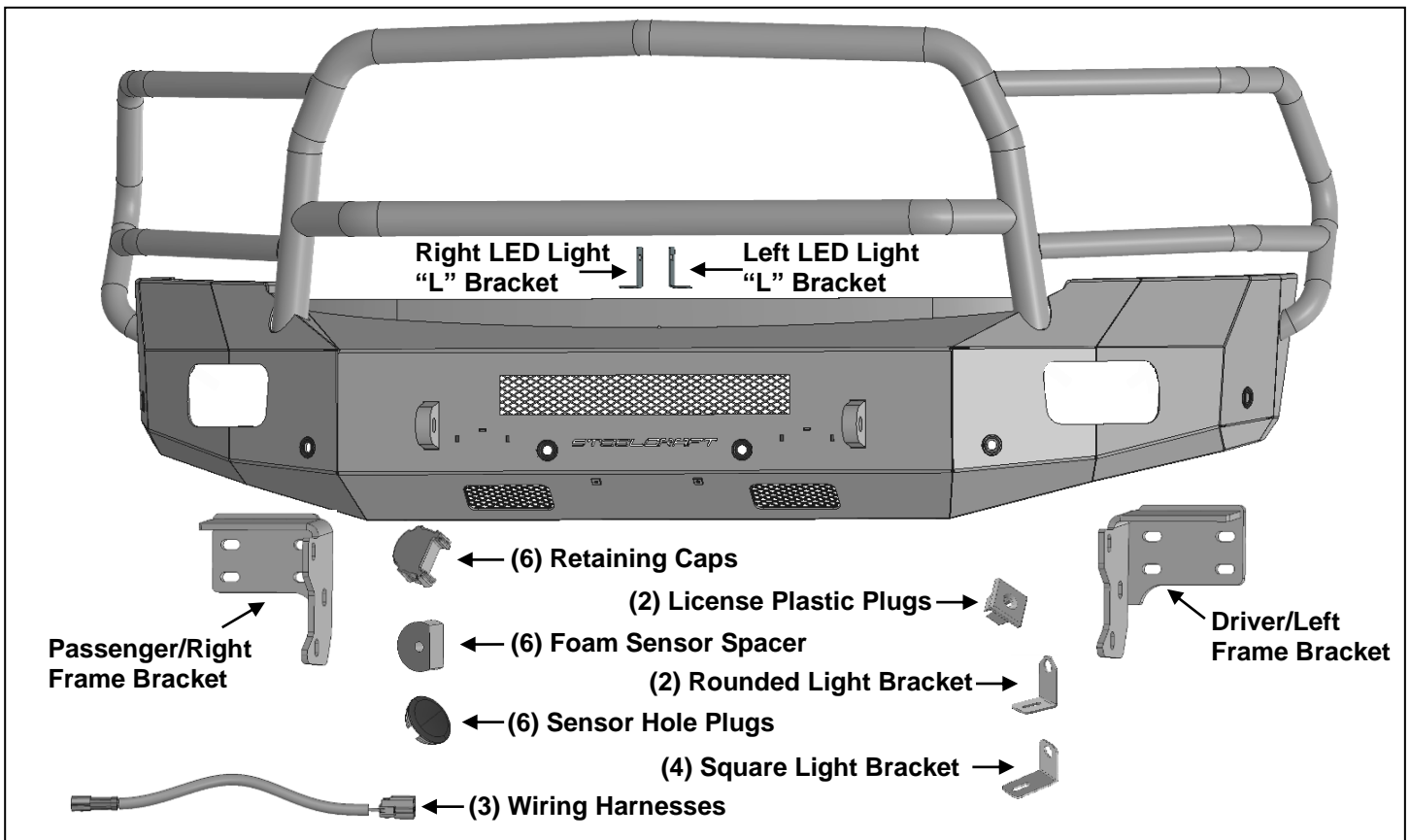


FORTIS MAXX FRONT BUMPER
2010-18 RAM 25-3500

PARTS LIST:

1	Fortis Front Bumper	12	12mm x 37mm x 3mm Large Flat Washers
1	Driver/left Frame Bracket	16	12mm x 32mm x 3mm STD Flat Washers
1	Passenger/right Frame Bracket	8	12mm Lock Washers
1	Left LED Light "L" Bracket	8	12-1.75mm Hex Nuts
1	Right LED Light "L" Bracket	6	12mm Nylon Lock Nuts
2	License Plastic Plugs	2	8-1.25mm x 25mm Hex Bolts
3	Wiring Harnesses	2	8-1.25mm x 16mm Hex Bolts
6	Foam Sensor Spacer	6	8mm x 24mm x 2mm Flat Washers
6	Retaining Caps	4	8mm Lock Washers
6	Sensor Hole Plugs	2	8-1.25mm Hex Nuts
1	Sensor Cover Kit	12	6mm x 18mm x 1.6mm Large Flat Washers
2	Rounded Fog Light Bracket	6	6-1.0mm Hex Nuts
4	Square Fog Light Bracket	6	6-1.0mm x 20mm Hex Bolts
14	12-1.75mm x 50mm Hex Bolts	6	6mm lock washers



PROCEDURE:

REMOVE CONTENTS FROM PACKAGING. SOME PARTS ARE SMALL AND WILL BE HIDDEN IN WRAPPINGS. VERIFY ALL PARTS ARE PRESENT AND DO NOT DISCARD PACKAGING UNTIL INSTALLATION IS COMPLETE. READ INSTRUCTIONS CAREFULLY BEFORE STARTING INSTALLATION. BUMPER IS HEAVY, ASSISTANCE IS HIGHLY RECOMMENDED TO AVOID POSSIBLE INJURY OR DAMAGE TO THE VEHICLE. NOTE: INSTALLATION OF A LIGHT BAR CAN AFFECT AIRFLOW TO THE COOLERS.

FORTIS MAXX FRONT BUMPER
2010-18 RAM 25-3500

1. Remove the license plate and bracket. On models with factory fog lights and/or sensors, unplug wiring harness leading to bumper, **(Figure 1)**. Release the harness from the clips attached to the back of the bumper and move harness away from bumper.
2. Next, open hood and remove the plastic cover between the top of the grille and the top of the radiator, **(Figure 2)**. Carefully remove the grille assembly, **(Figure 3)**.
3. Place blocks or jack stands under the front bumper to support it during mounting bolt removal. Once the bumper has been safely supported, remove the hex nuts attaching each side of the bumper to the brackets on the end of the frame, **(Figure 4)**. **WARNING!** Assistance is required to hold the bumper in place during hardware removal to prevent it from falling. Slide the bumper off of the tow hooks.
4. Next, remove the tow hooks from the end of the frame, **(Figures 5 & 6)**.
5. Carefully reinstall the grille and the top radiator cover that were removed in Step 2, ensuring all clips and fasteners are securely in place.
6. Select the driver/left Frame Bracket. Attach the Bracket to the end of the frame with (4) 12mm x 50mm Hex Bolts, (8) 12mm x 32mm STD Flat Washers, (4) 12mm Lock Washers and (4) 12mm Hex Nuts, **(Figure 7)**. Leave hardware loose. Repeat this Step to install the passenger/right Frame Bracket.
7. On models with factory fog lights:
 - a. Remove fog lights from factory bumper.
 - b. From the driver/left side, Attach (1) Rounded Light Bracket to the outside of the fog light opening and (2) Square Light Brackets to the other fog light mounts using (3) 6mm Hex Bolts, (4) 6mm x 18mm Flat Washers, and (3) 6mm Lock Washers, hand tighten only, **(Figure 9)**. **NOTE:** Ensure the brackets are oriented precisely as shown in **Figure 9**. Pay close attention to their positioning and alignment.
 - c. Carefully snap each fog light tab into the (3) mounting tabs on the back of the Bumper, **(Figure 10)**.
 - d. Repeat **Steps a-c** to passenger/right and fully tighten.
8. **Center LED light installation**, (not included, light sold separately). **NOTE:** It may be easier to install light in Bumper before attaching Bumper to vehicle.
 - a. Select the L/R "L" Brackets, **(Figure 11)**. **NOTE:** "L" Brackets are offset for universal fitment for most LED bar style lights.
 - b. Attach the brackets to the tabs on the back of the Bumper with the included (2) 8mm x 25mm Hex Bolts, (4) 8mm Flat Washers, (2) 8mm Lock Washers and (2) 8mm Hex Nuts, **(Figure 11)**.
 - c. Attach the LED light assembly to the "L" Brackets with the included (2) 8mm x 16mm Hex Bolts, (2) 8mm Lock Washers and (2) 8mm Flat Washers, **(Figure 11)**. Do not fully tighten hardware at this time. **NOTE:** "L" Brackets may require modification for hardware larger than 8mm or use brackets supplied with light if possible.
 - d. Adjust light position and tighten hardware.
 - e. Follow light manufacturer's instructions to wire the light to the vehicle's electrical system.
9. **Determine if vehicle is equipped with parking sensors.** **NOTE:** Sensors, (if equipped), must be installed in Bumper before Bumper is attached to Brackets.

Models without bumper sensors:

- a. Select the included (6) Sensor Hole Plugs.
- b. From the front, push the plugs into the sensor mounting holes, **(Figure 12)**.

Models with bumper mounted sensors:

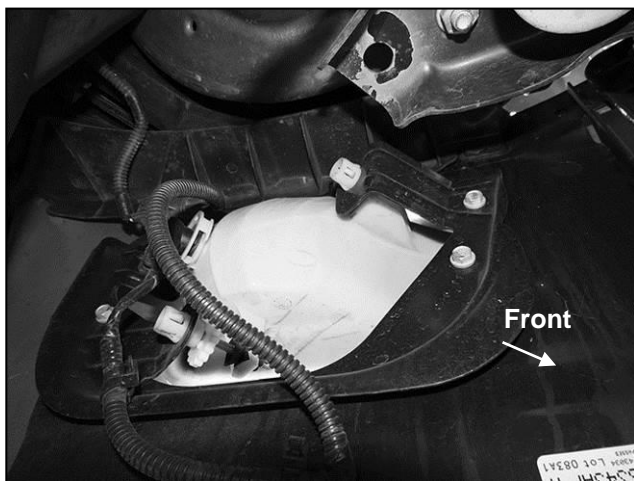
- a. Remove sensors and wiring harness from back of OE Bumper. **NOTE:** Be sure to match the orientation of the sensors to their original positions, including the direction they are facing, when installing them on the bumper.
- b. Push the sensor in from the back of the Bumper until it is flush with the Bumper. Place Foam Spacer over end of sensor. Push Sensor Retaining Cap onto sensor mount and lock into mounting holes, **(Figure 13)**.
- c. Repeat the previous steps to install the remaining sensors.
- d. Starting on the driver/left side, run the OE sensor wire harness through the bumper cutouts. Connect the first three driver/left sensors to the OE sensor wire harness.
- e. Use the provided wire harness extensions to connect the wire harness to the remaining three passenger/right side sensors.

**FORTIS MAXX FRONT BUMPER
2010-18 RAM 25-3500**

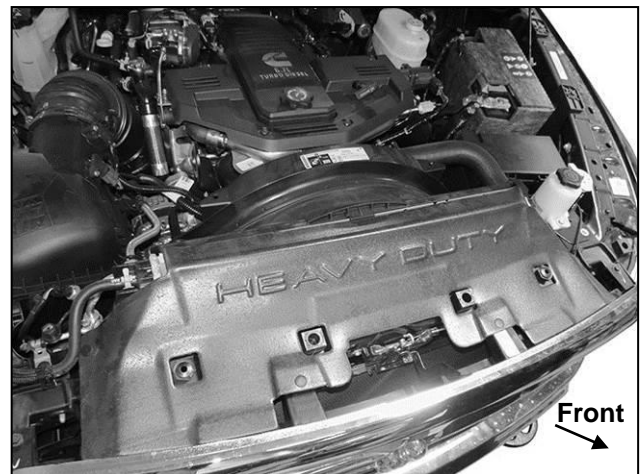
10. With assistance, position the Bumper Assembly up to the insides of the Frame Brackets. Temporarily support the weight of the Bumper. **WARNING:** To avoid possible injury or damage to the vehicle, do not proceed until the Bumper is fully and safely supported.
11. Attach the Bumper to the inside of the Frame Brackets with (6) 12mm x 50mm Hex Bolts, (12) 12mm x 37mm Large Flat Washers and (6) 12mm Nylon Lock Nuts, **(Figures 14 & 15)**. Do not fully tighten.
12. Level and adjust the bumper and fully tighten all hardware.
13. Plug in the bumper harness if equipped, to the main wiring harness.
14. If front license plate is required, insert (2) Plastic Plugs into the square holes in the front of the Bumper, **(Figure 16)**. Reuse the factory screws to attach the license plate to the plastic plugs.
15. Do periodic inspections to the installation to make sure that all hardware is secure and tight.

To protect your investment, Do not use any type of polish or wax that may contain abrasives that could damage the finish. Mild soap may be used to clean the Bumper assembly.

Driver/left Side Installation Pictured

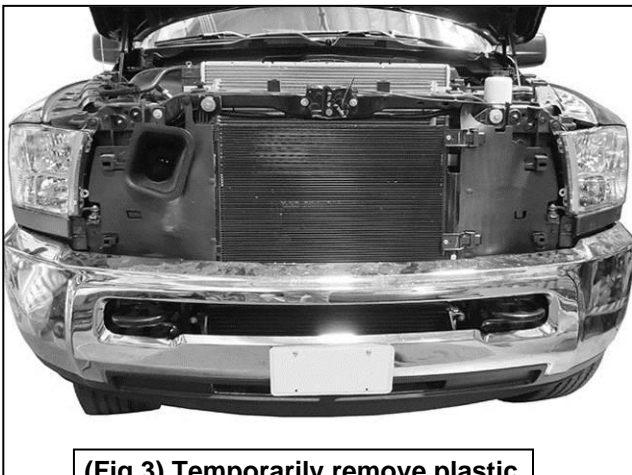


(Fig 1) Unplug lights and sensors if equipped. Unplug harness to bumper and move harness

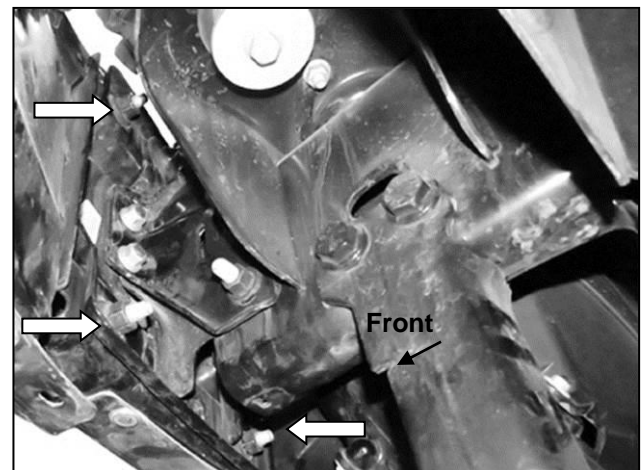


(Fig 2) Open hood and remove plastic cover

WARNING! Do not remove bumper bolts unless the bumper is properly supported on blocks or stands or it may fall.

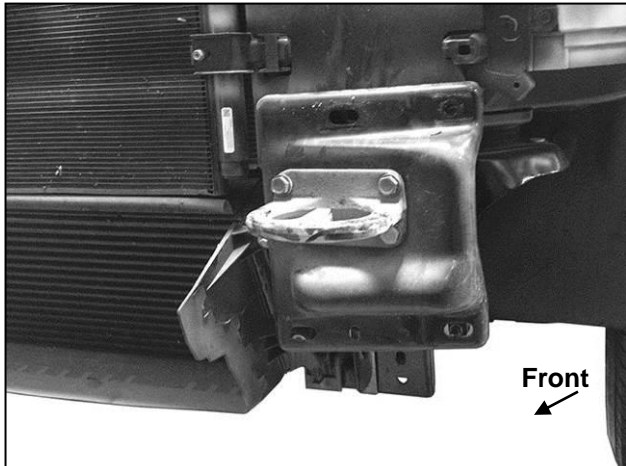


(Fig 3) Temporarily remove plastic grille to access top bumper bolts

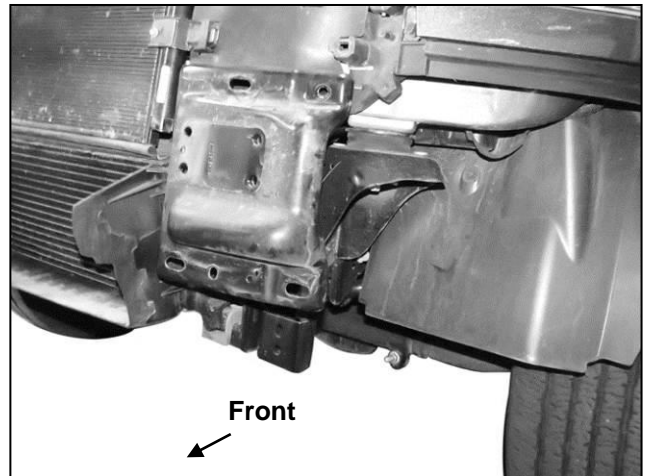


(Fig 4) Remove hex nuts from bumper bolts (arrows). Bumper bracket pictured from below/behind bumper

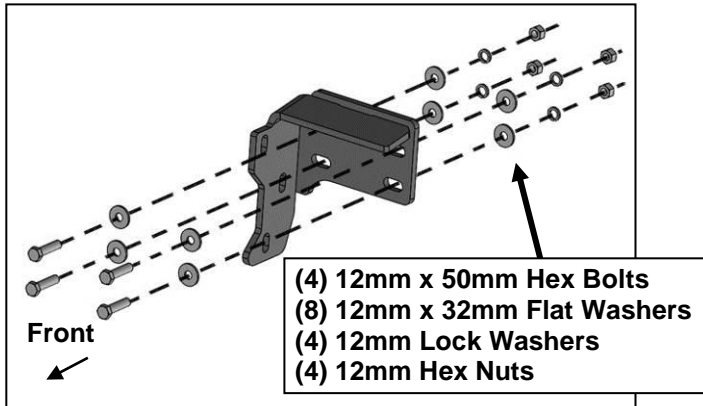
Driver/left Side Installation Pictured



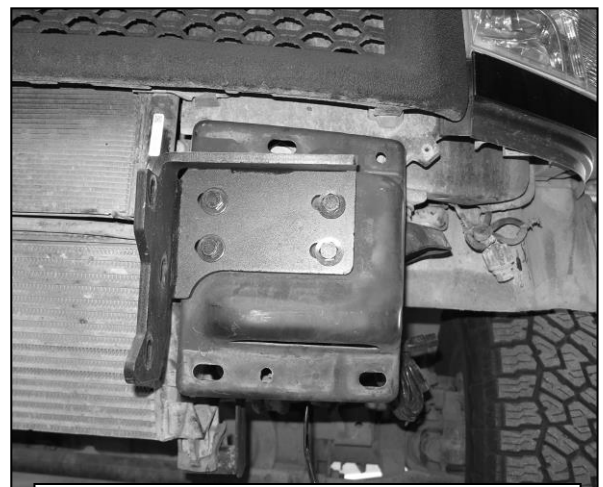
(Fig 5) Remove tow hook (Driver side pictured)



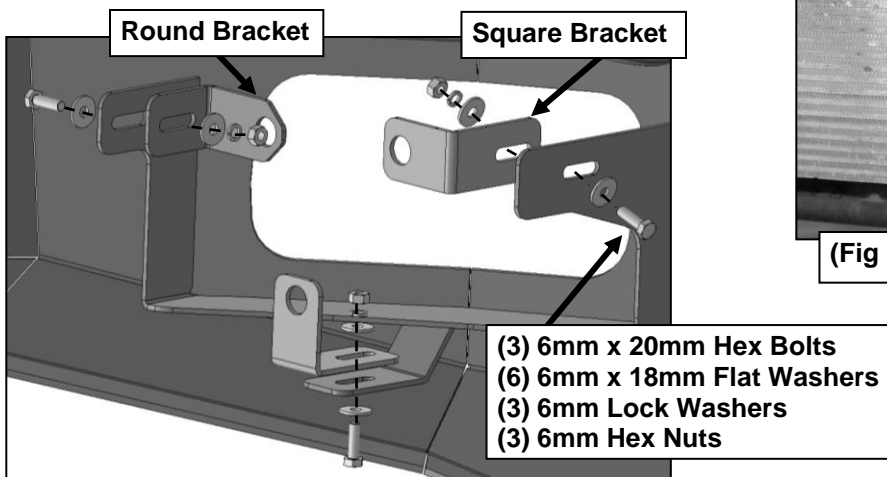
(Fig 6) Tow hook removed from driver side



(Fig 7) Attach Frame Bracket to the frame (driver/left side illustrated)

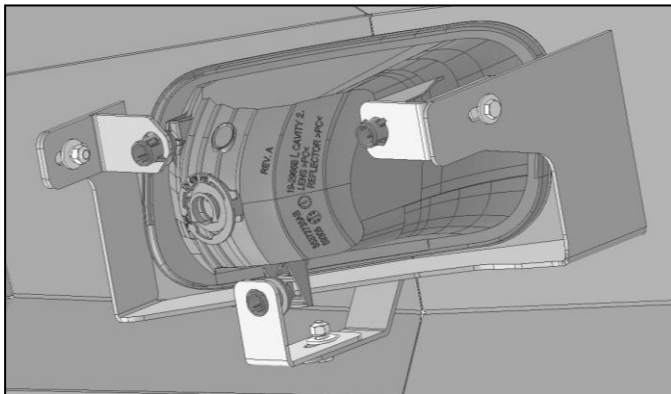


(Fig 8) Driver/left Frame Bracket Installed



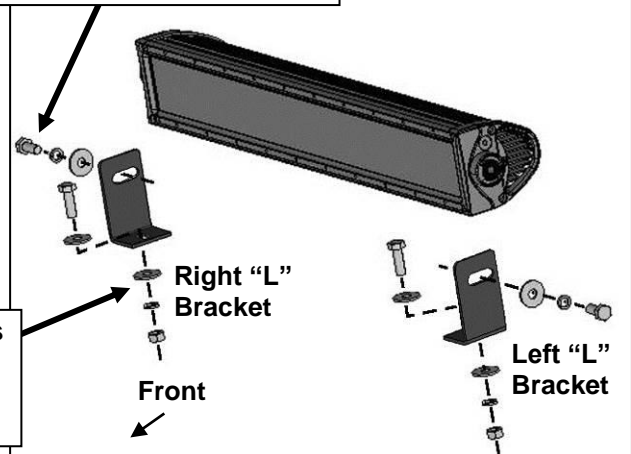
(Fig 9) Attach the Round Light Bracket to the outer mounting tab, and install the two Square Light Brackets on the remaining tabs of the bumper.
NOTE: Brackets mount in opposite directions, so check orientation carefully.

Driver/left Side Installation Pictured



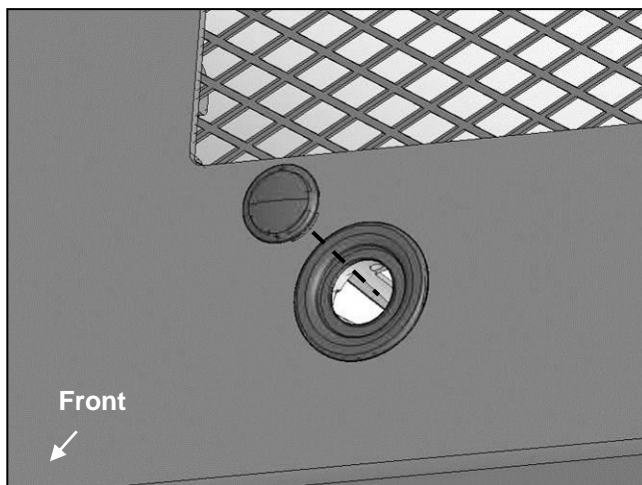
(Fig 10) Line up the tabs with the attached brackets and carefully push the light into the mounting tabs.

- (2) 8mm x 16mm Hex Bolts**
- (2) 8mm Lock Washers**
- (2) 8mm Flat Washers**

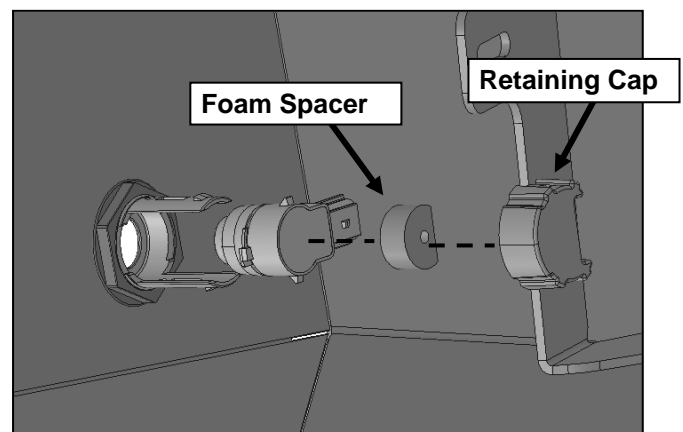


(Fig 11) Example of center light installation

- (2) 8mm x 25mm Hex Bolts**
- (4) 8mm Flat Washers**
- (2) 8mm Lock Washers**
- (2) 8mm Hex Nuts**



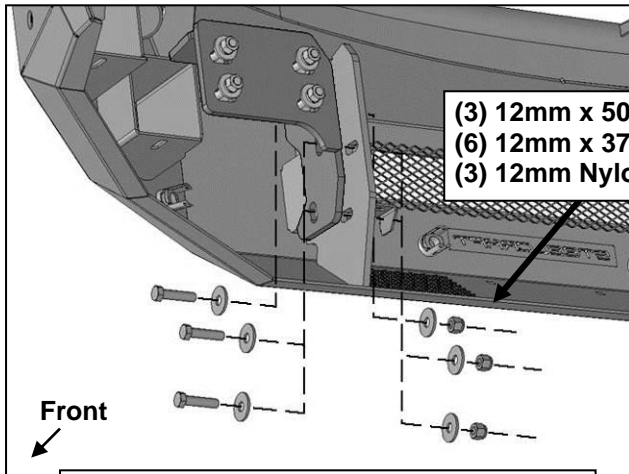
(Fig 12) Push Plastic Plug into sensor



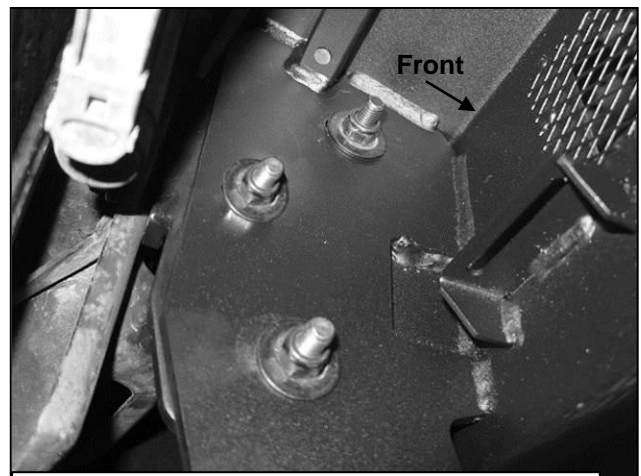
(Fig 13) Insert sensor into the sensor mount on back of Bumper, followed by the Retaining Cap with Spacer

Driver/left Side Installation Pictured

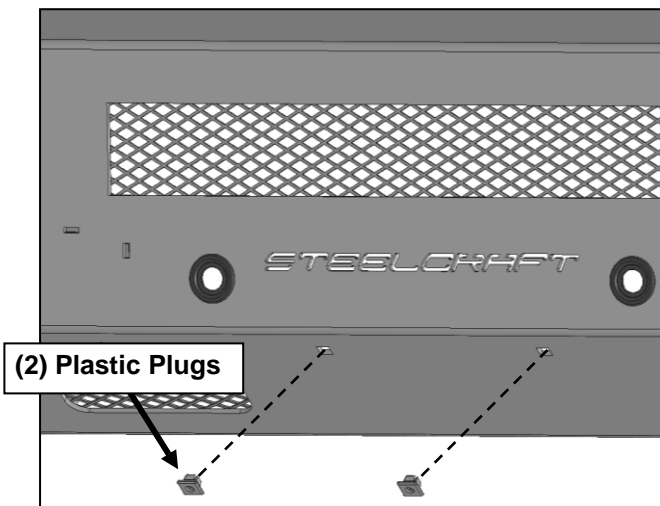
WARNING! Do not crawl under bumper unless it is properly supported on blocks or stands or the bumper may fall.



(Fig 14) Driver/left side Frame Bracket attached to mounting plate on Bumper



(Fig 15) Driver/left side complete installation



(2) Plastic Plugs

(Fig 16) Attach license plate Plugs in Bumper



Completed Installation