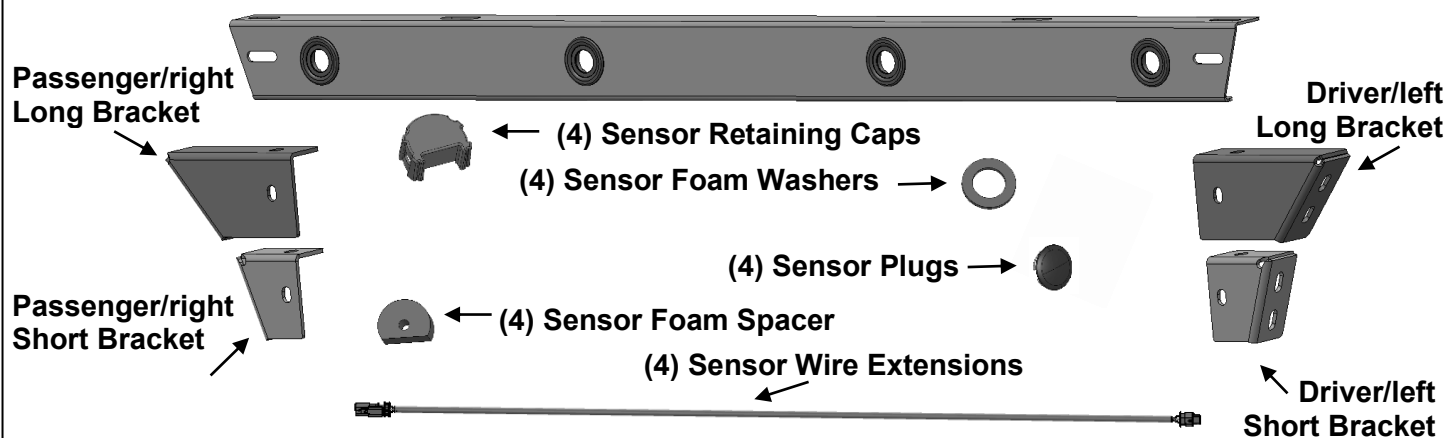


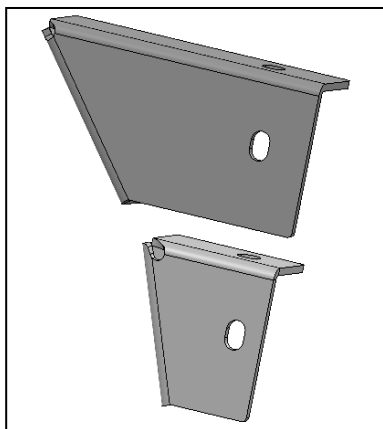
STEELCRAFT GM SENSOR RELOCATION BAR
2019-25 GMC SIERRA 1500
2020-25 GMC SIERRA 2500/3500
2020-25 CHEVY SILVERADO 2500/3500

| Qty | Description | Qty | Description |
|-----|--------------------------|-----|-----------------------|
| 1 | GM Sensor Relocation Bar | 4 | Sensor Retaining Caps |
| 1 | DS Short Bracket | 4 | Sensor Foam Spacers |
| 1 | PS Short Bracket | 4 | Sensor Foam Washer |
| 1 | DS Long Bracket | 4 | Sensor Wire Extension |
| 1 | PS Long Bracket | 4 | Sensor Plugs |
| 8 | M6 Button Head Bolts | 1 | Sensor Cover Kit |
| 16 | M6 Flat Washers | 1 | Allen Wrench |
| 8 | M6 Nylon Lock Nut | | |

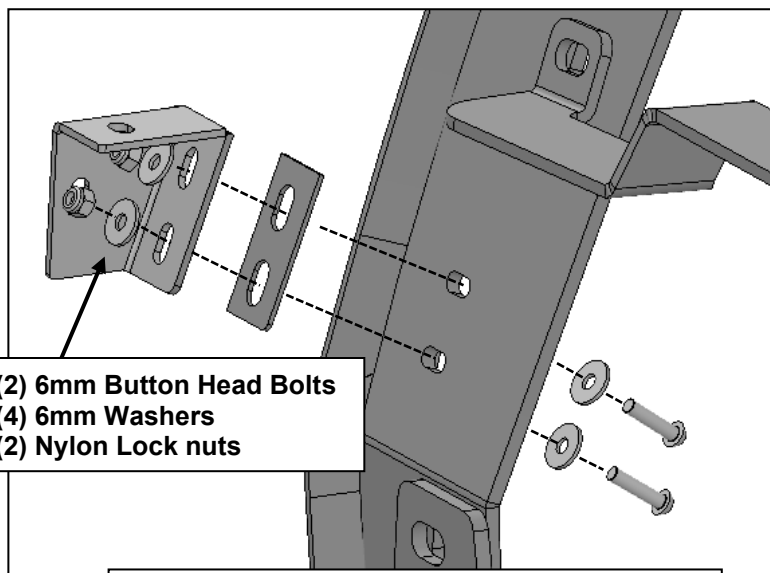


PROCEDURE:

REMOVE CONTENTS FROM PACKAGING. SOME PARTS ARE SMALL AND WILL BE HIDDEN IN WRAPPINGS. VERIFY ALL PARTS ARE PRESENT AND DO NOT DISCARD PACKAGING UNTIL THE INSTALLATION IS COMPLETE. READ INSTRUCTIONS CAREFULLY BEFORE STARTING INSTALLATION.



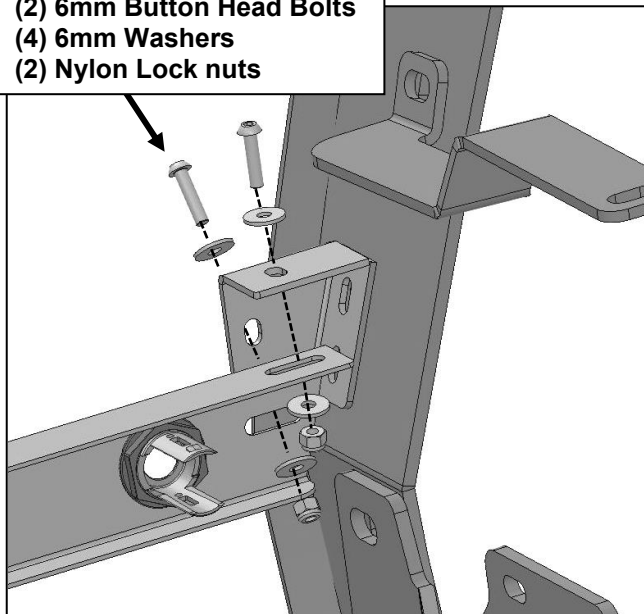
(Step 1) Decide if you will be using the Short Bracket or Long Bracket by finding holes on the uprights and picking the bracket that is parallel with the ground.



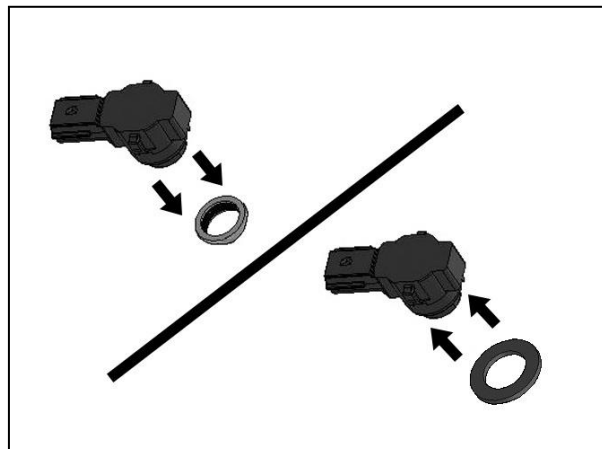
(Step 2) Attach selected Bracket to Grille Guard upright.

STEELCRAFT GM SENSOR RELOCATION BAR
2019-25 GMC SIERRA 1500
2020-25 GMC SIERRA 2500/3500
2020-25 CHEVY SILVERADO 2500/3500

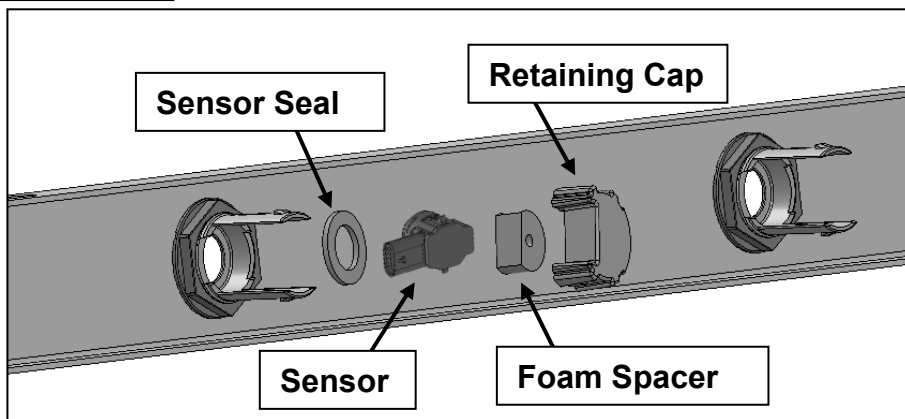
- (2) 6mm Button Head Bolts
- (4) 6mm Washers
- (2) Nylon Lock nuts



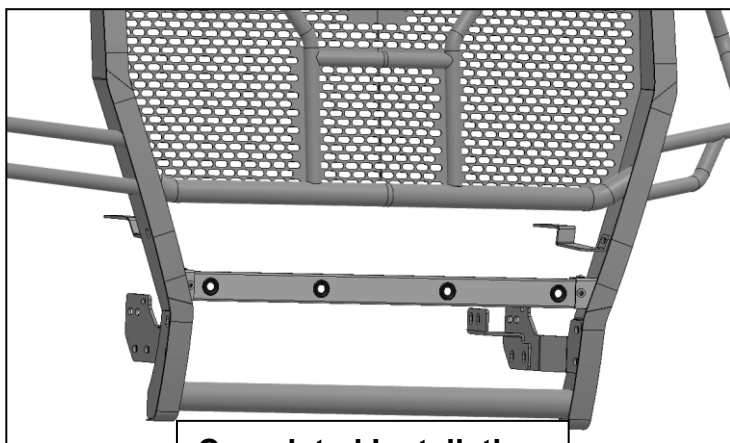
(Step 3) Attach Sensor Bar to Brackets



(Step 4) Remove silicone seal from sensor. Slide large Seal over end of sensor.



(Step 5) Insert sensor with Seal into the sensor mount on back of Sensor Bar, followed by Foam Spacer and Retaining Cap.



Completed Installation