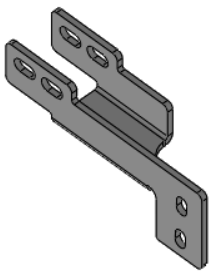
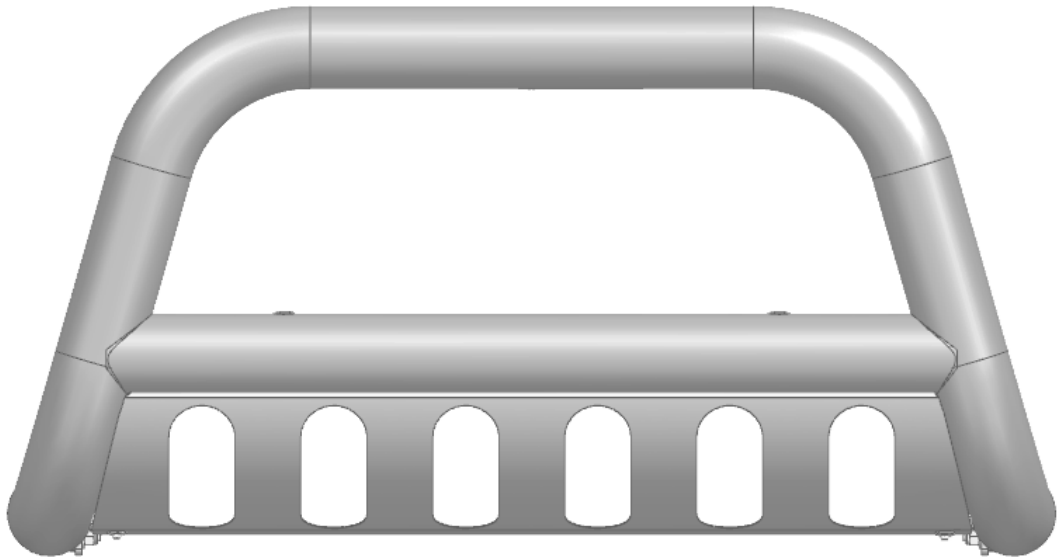


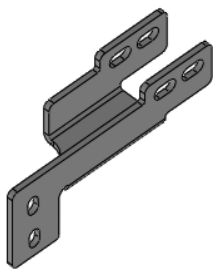
INSTALLATION INSTRUCTIONS

PARTS LIST:

Qty	Description	Qty	Description
1	3in Bull Bar	4	12-1.75mm Nylon Lock Nuts
1	Driver/left Mounting Bracket	4	10-1.5mm x 30mm Hex Bolts
1	Passenger/right Mounting Bracket	8	10mm x 24mm x 2.2mm Flat Washers
4	12-1.75mm x 80mm Hex Bolts	4	10-1.5mm Nylon Lock Nuts
8	12mm x 24mm x 2.5mm Flat Washers		



PS Mounting Bracket



DS Mounting Bracket



Hex Bolt



Flat Washer

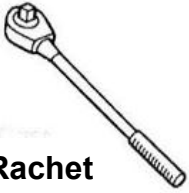


Lock Washer



Nylon Lock Nut

TOOLS REQUIRED



Ratchet



Socket



Extensions



Wrench

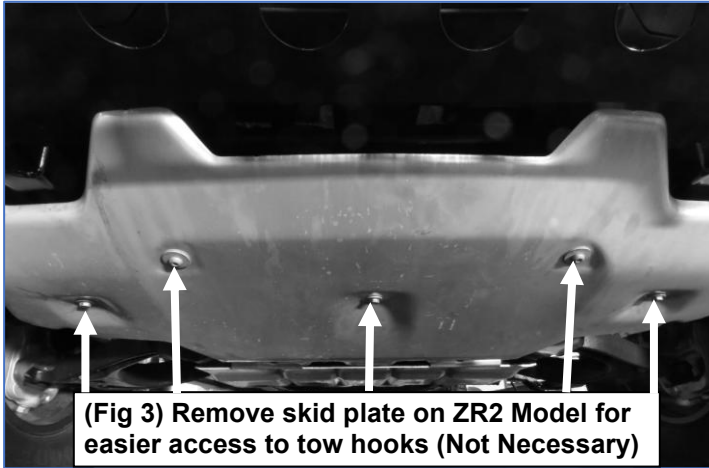
- 1 Follow (Fig 1 – 5) to prepare the vehicle to install the mounting brackets for the bull bar.
Note: Tow hooks will need to be removed if equipped because they will not be compatible with the bull bar.



(Fig 1) Vehicles with the plastic air dam can be removed to make install easier



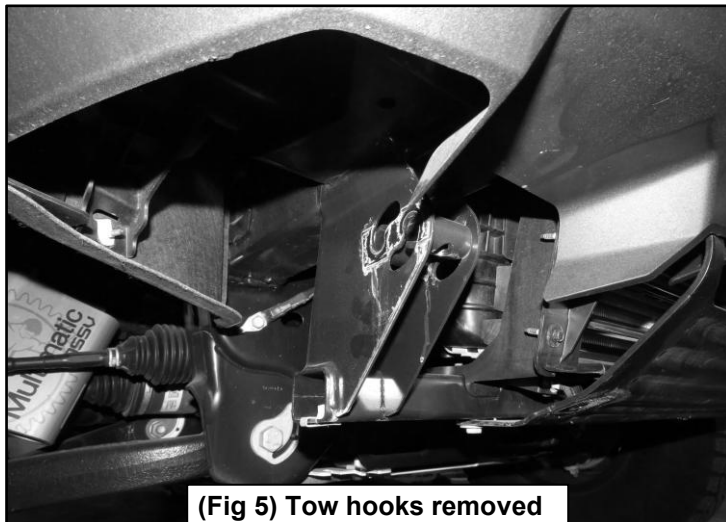
(Fig 2) ZR2 models with skid plates can be removed to make install easier



(Fig 3) Remove skid plate on ZR2 Model for easier access to tow hooks (Not Necessary)



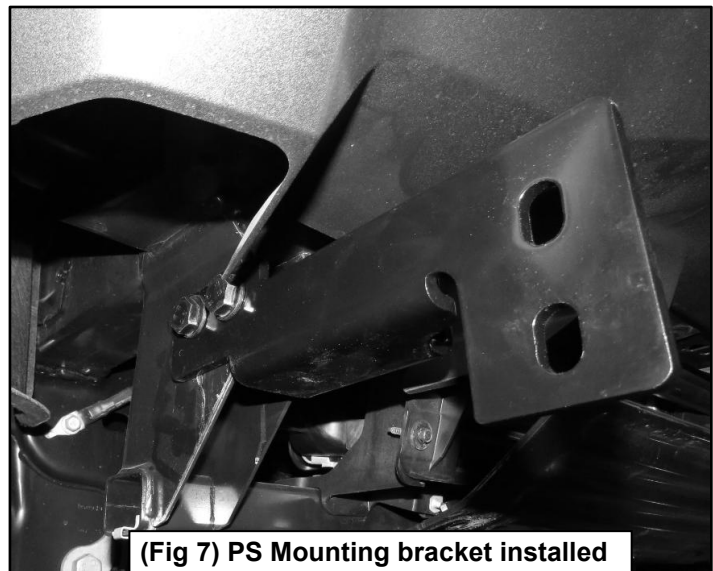
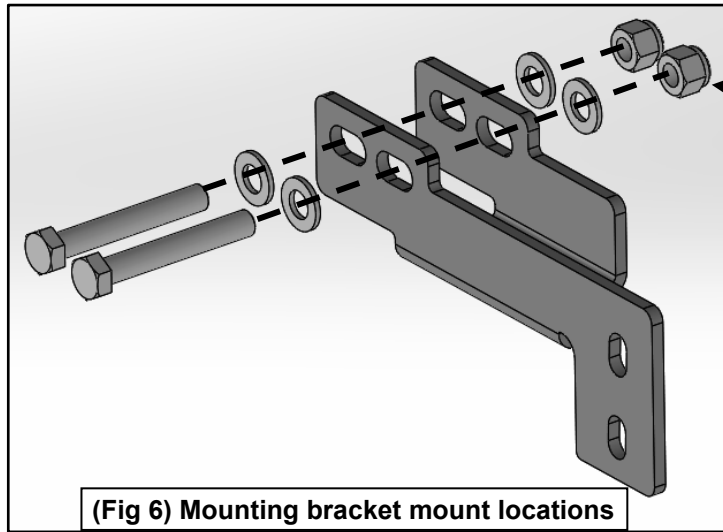
(Fig 4) Tow hooks exposed once air dam/skid plate is removed



(Fig 5) Tow hooks removed

2

Follow (Fig 6 – 8) to install the mounting brackets to the frame of the vehicle.



**Note: Re-install air dam
if removed**

3

Follow (Fig 9) to install bull bar to mounting brackets. Once installation is complete do periodic inspections to the installation to make sure that all hardware is secure and tight.

(2) 10mm Hex Bolts
(4) 10mm Flat Washers
(2) 10mm Lock Nuts

