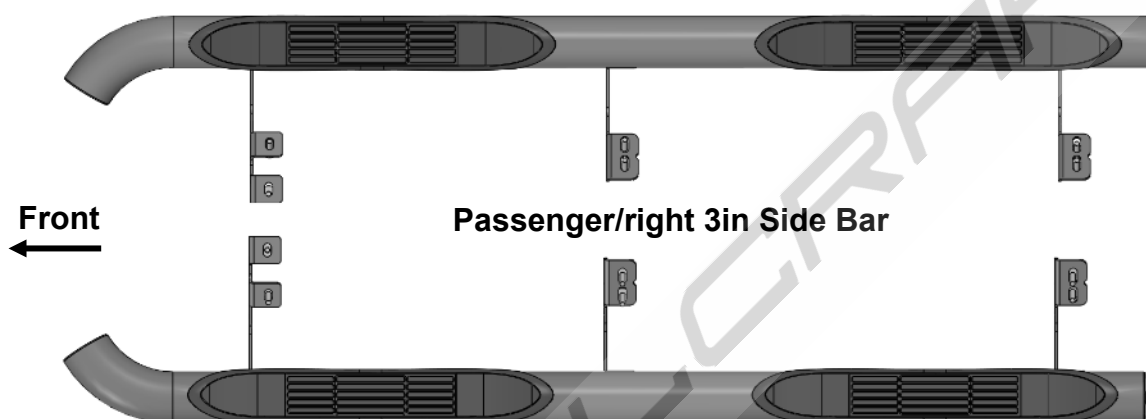


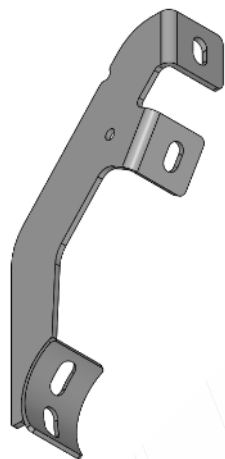
INSTALLATION INSTRUCTIONS

PARTS LIST:

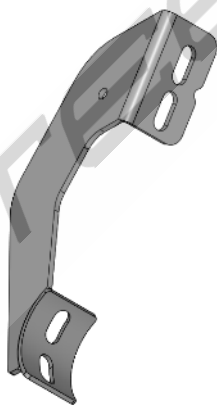
Qty	Description	Qty	Description
1	Driver/left Sidebar	2	Passenger/Right Center and Rear Mounting Bracket
1	Passenger/right Sidebar	12	8-1.25mm x 25mm Combo Bolts
1	Driver/Left Front Mounting Bracket	12	8-1.25mm x 30mm Hex Bolts
1	Passenger/Right Front Mounting Bracket	12	8mm x 24mm x 2mm Flat Washers
2	Driver/Left Center and Rear Mounting Bracket	12	8mm Lock Washers



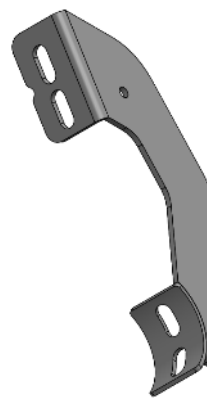
Driver/left 3in Side Bar



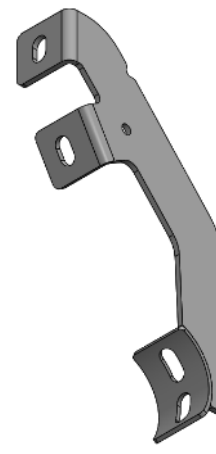
Driver/left Front Mounting Bracket



Driver/left Center/Rear Mounting Bracket



Passenger/right Center/Rear Mounting Bracket



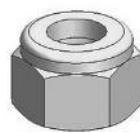
Passenger/right Front Mounting Bracket



Lock Washer



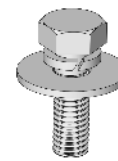
Flat Washer



Nylon Lock Nut

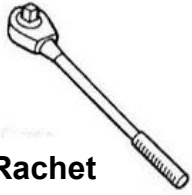


Hex Bolt



Combo Bolt

TOOLS REQUIRED



Ratchet



13mm Socket



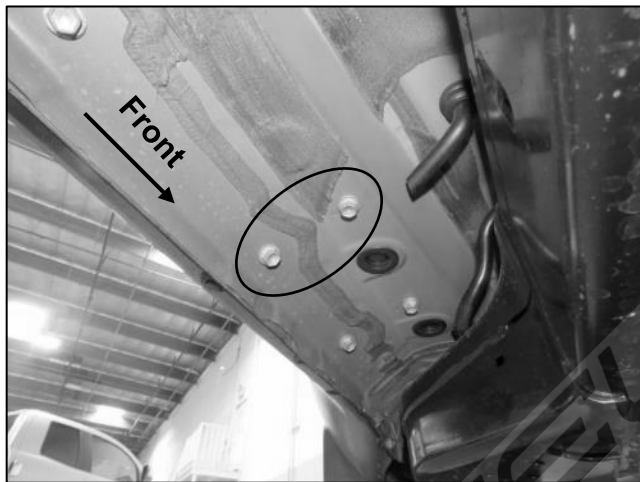
Extensions



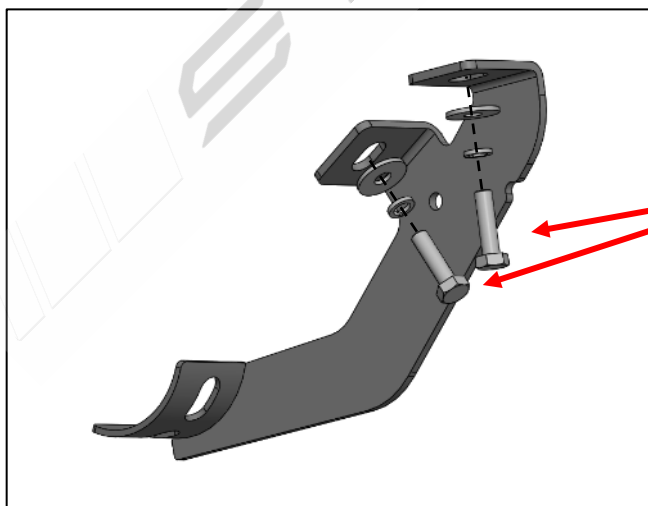
Wrench

1

Follow (Fig 1 – 5) to install the Mounting Brackets to the vehicle. Driver/left side installation depicted, once installation is complete, repeat for the Passenger/right side. Do not fully tighten at this point.

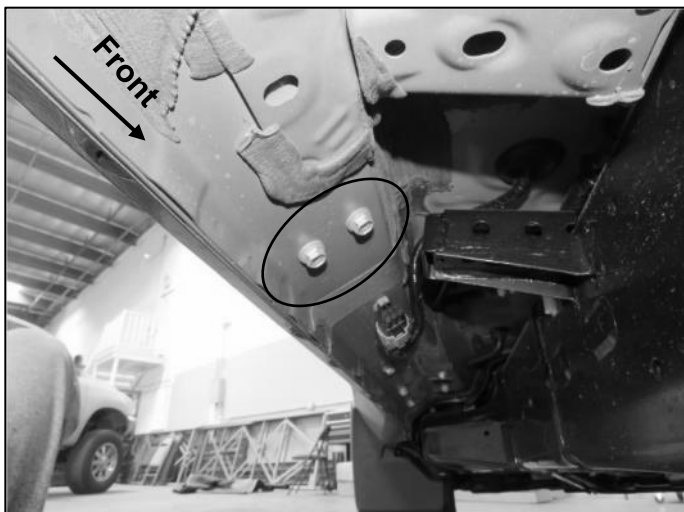


(Fig 1) Locate the front mounting location circled and remove the OEM 8mm bolts.



**(2) 8mm Hex Bolts
(2) 8mm Lock Washers
(2) 8mm Flat Washers**

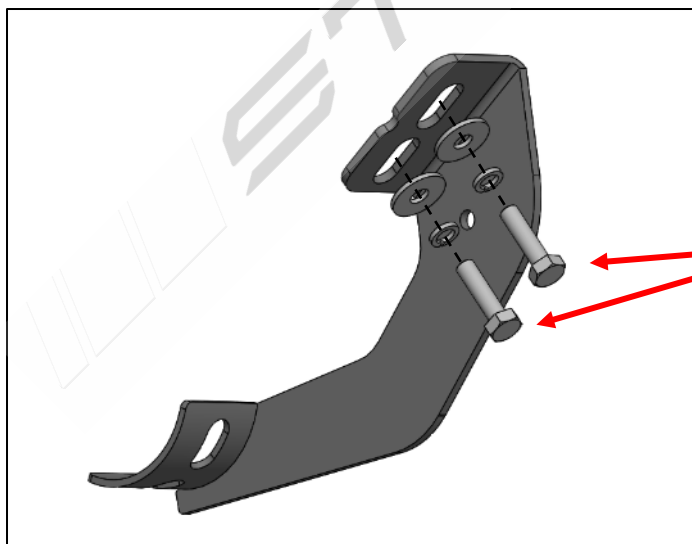
(Fig 2) Install the Front Mounting Bracket as shown.



(Fig 3) Locate the center mounting points circled and remove the OEM 8mm bolts.



(Fig 4) Locate the rear mounting points circled and remove the OEM 8mm bolts.

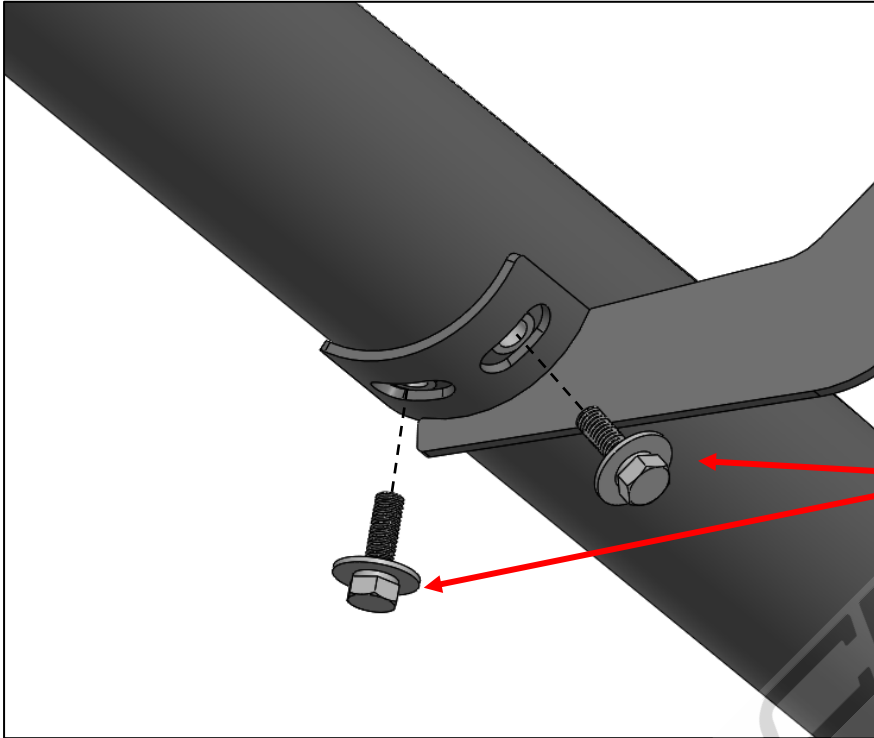


(Fig 5) Install the Center/Rear Mounting Brackets as shown.

- (2) 8mm Hex Bolts**
- (2) 8mm Lock Washers**
- (2) 8mm Flat Washers**

2

Follow (Fig 6) to install the 3in Side Bar to the Mounting Brackets.

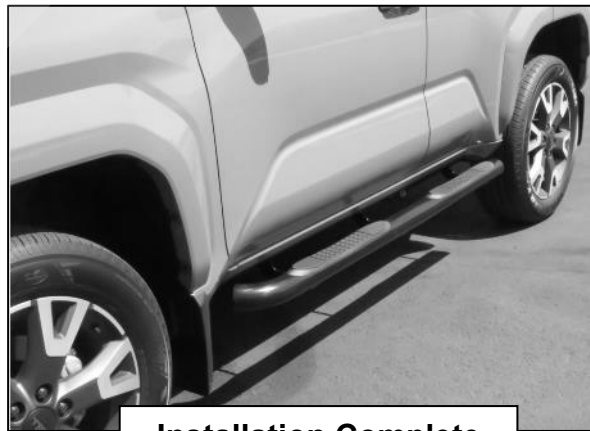


(2) 8mm Combo Bolts

(Fig 6) Align the 3in Side Bar to the Mounting Brackets and install as shown.

3

Installation is now complete. Adjust and tighten all Mounting Brackets to the desired position. Perform periodic inspections to ensure that all hardware is fully tightened.



Installation Complete