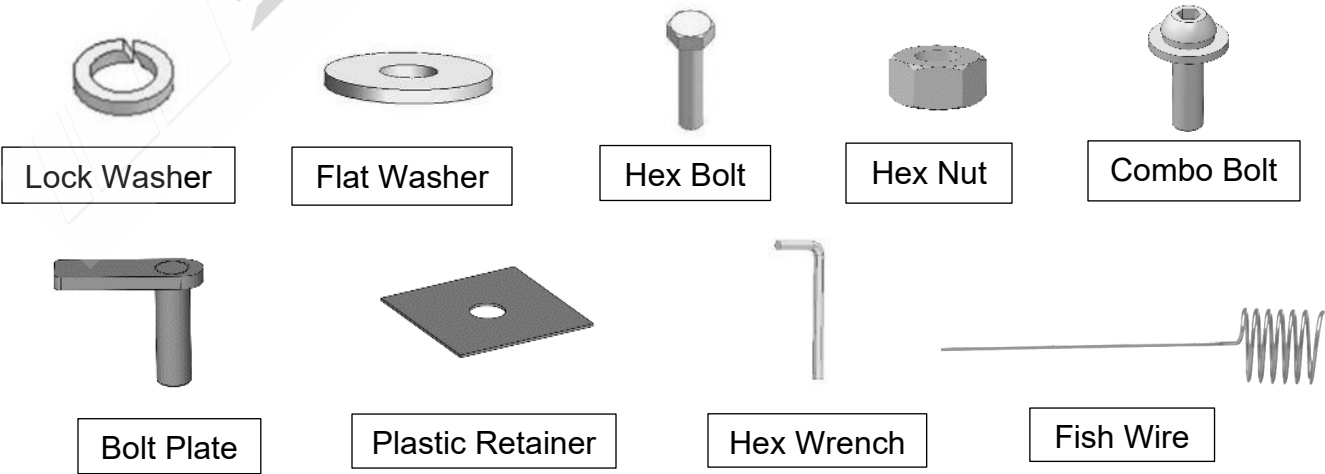
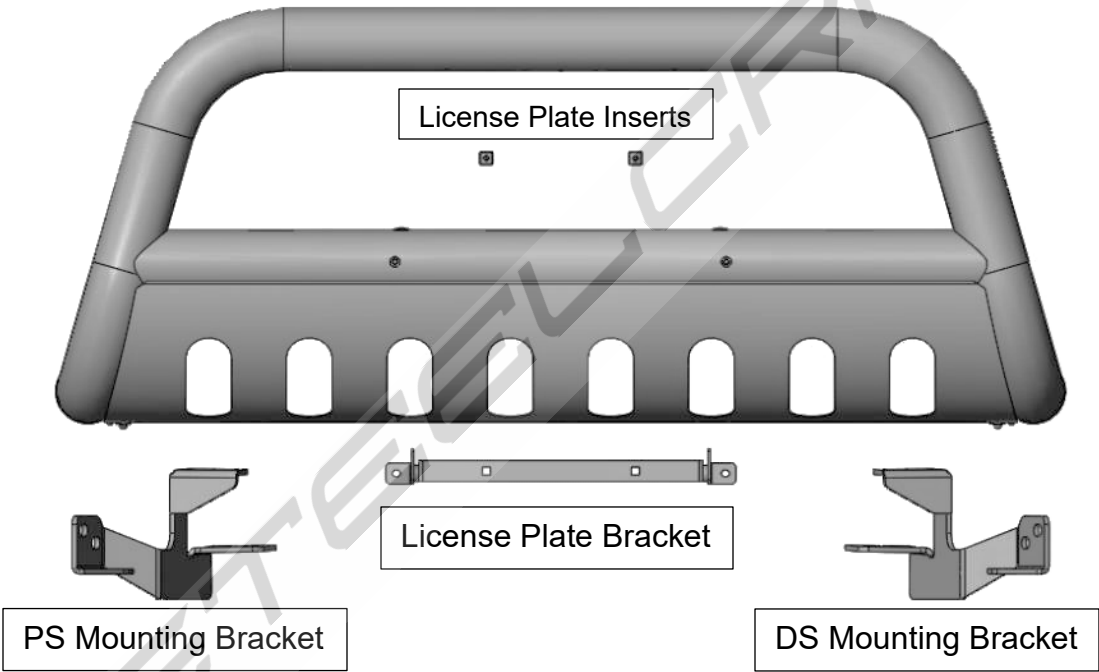


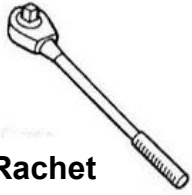
INSTALLATION INSTRUCTIONS

PARTS LIST:

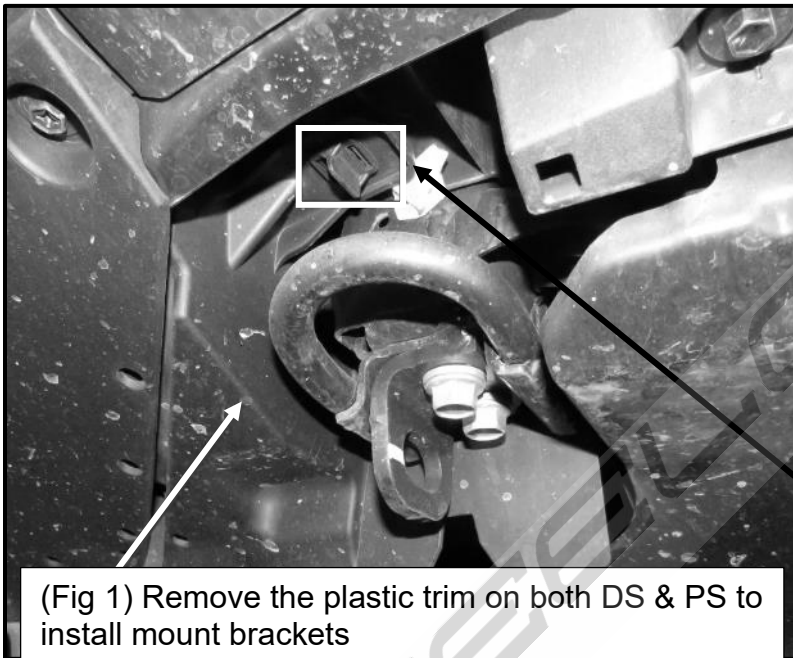
Description	Qty	Description	Qty
Bull Bar	1	10mm Hex Nuts	2
Driver/Left Mounting Bracket	1	12mm x 32mm x 3mm Flat Washers	8
Passenger/Right Mounting Bracket	1	10mm x 27mm x 3mm Flat Washers	2
License Plate Holder	1	10mm Lock Washers	2
Plastic inserts for license plate	2	Allen Wrench S=4	1
6-1.25mm x 20mm Combo Bolts	2	Plastic Retainers	2
12mm x 40mm Hex Bolts	4	Bolt Plates	2
10mm Fish Wire	1	12mm Nylon Lock Nuts	4

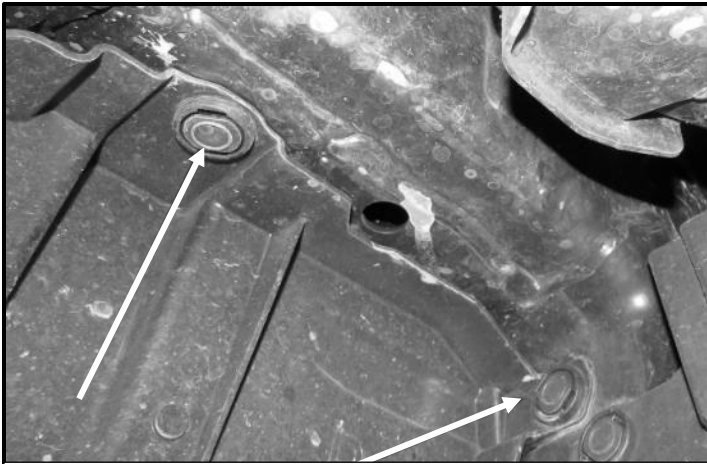


## TOOLS REQUIRED

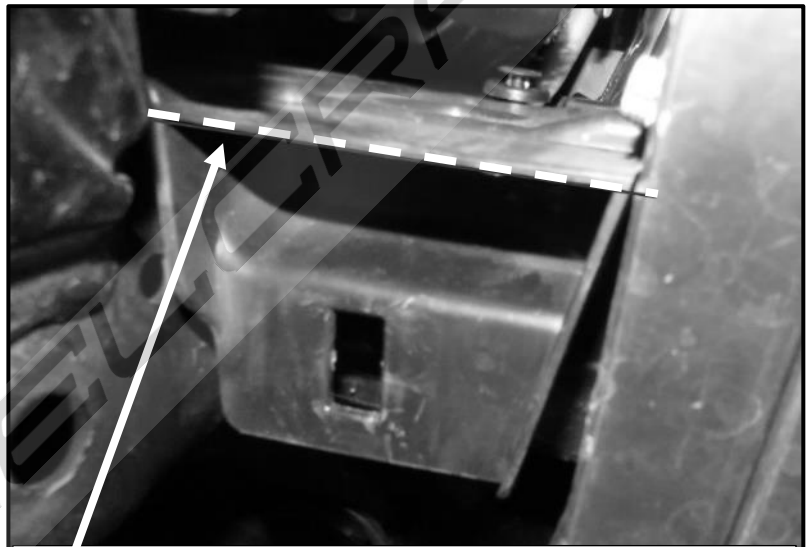


- 1 Follow (Fig 1 – 15) to remove plastic trim and to attach the mounting brackets to the vehicle.

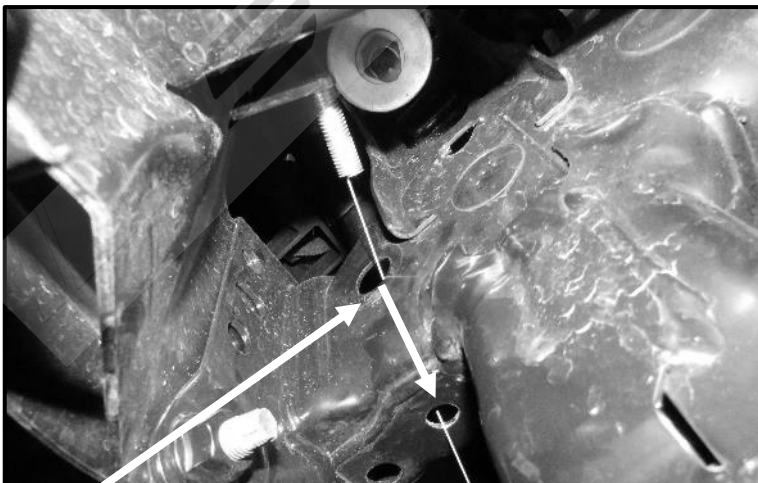




(Fig 3) Rear plastic clip need to be removed as well

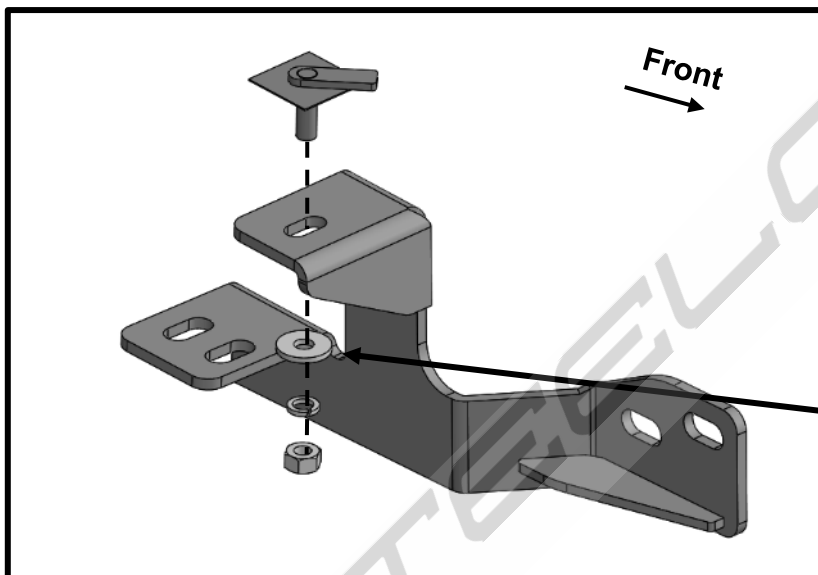
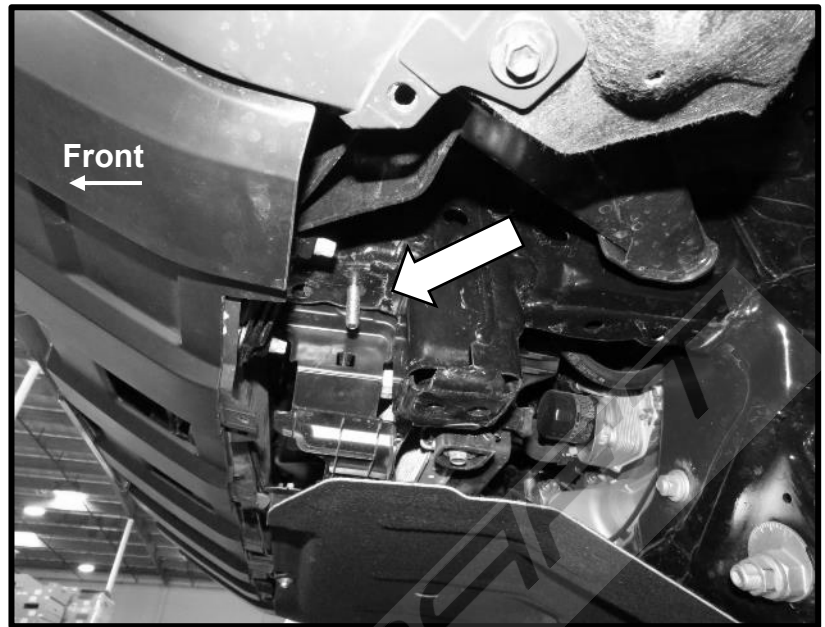


(Fig 4) Now with the plastic trim removed, trim the plastic piece that is remaining under the mount point



(Fig 5) Use fish wire to guide the bolt plate into its mount hole

(Fig 6) Insert the Bolt Plate to the pictured hole and attach the Plastic Retainer. Do this for both sides.

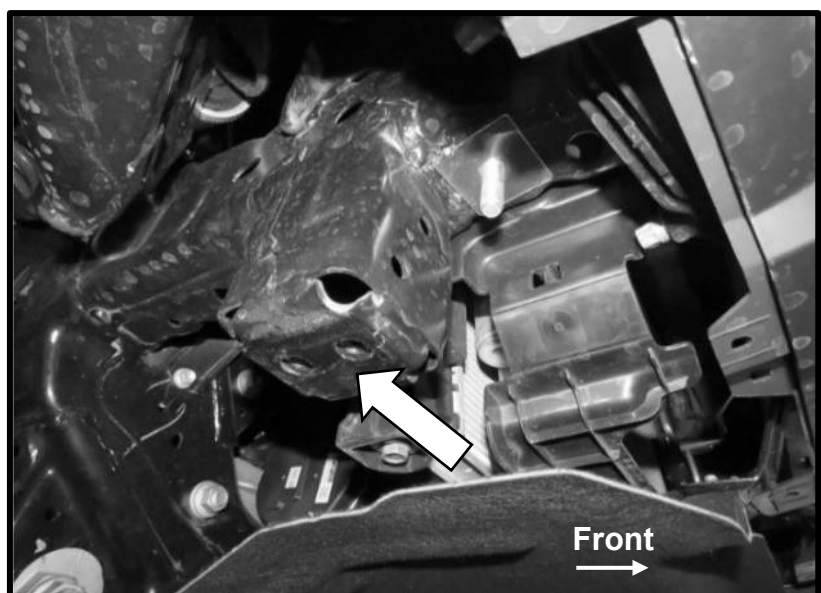


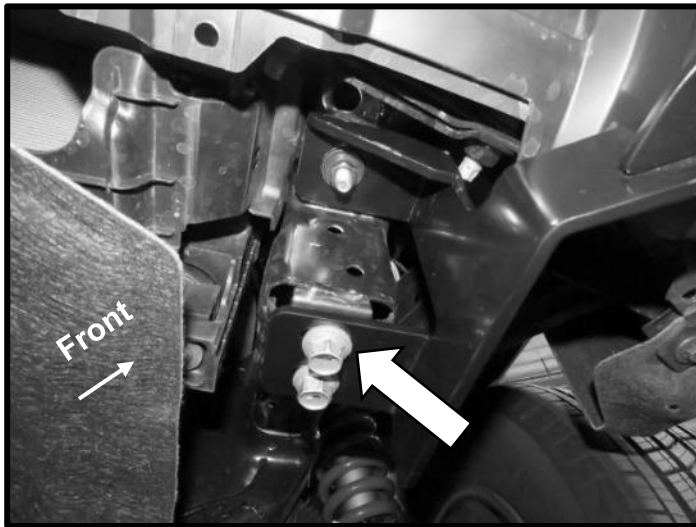
(Fig 7) Install the Mounting Bracket to the Bolt Plate as pictured.

- (1) 10mm Bolt Plate
- (1) 10mm Plastic Retainer
- (1) 10mm Lock Washer
- (1) 10mm Flat Washer
- (1) 10mm Hex Nut

Note: If your vehicle has a tow-hook here, remove that as well.

(Fig 8) On both sides, remove the two bolts located the arrow. Set them aside, they will be reused.





(Fig 9) Complete installation of the Mounting Brackets by reusing the OEM hardware as pictured.

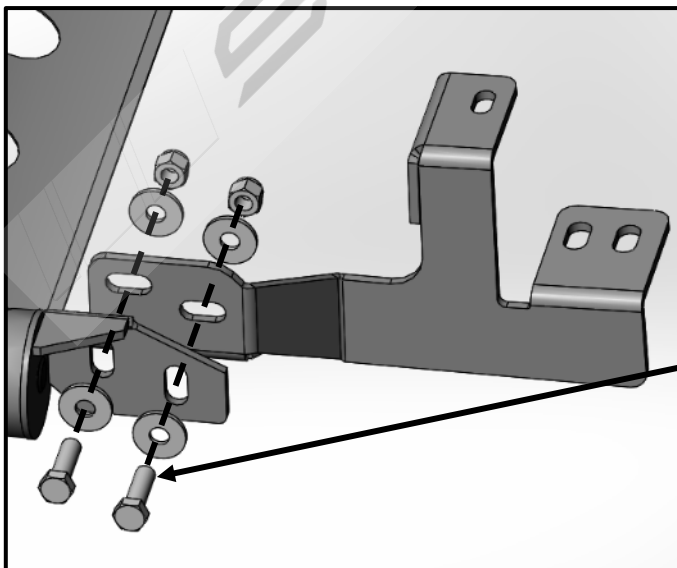
Note: For tow-hook reinstallation, see (Fig 10) before completing this step.

(Fig 10) For optional tow hook re-installation, stack them underneath the Mounting Brackets as shown. Then re-use the OEM hardware to install both the mounting bracket and the tow hook to the mount point.



2

Follow (Fig 11) to install the Bull Bar to the Mounting Brackets. Remove front license plate before attaching the Bull Bar to the Mounting Brackets. Set license plate aside for now. Once the Bull Bar is attached to the Mounting Brackets, level and center the Bull Bar, then tighten all hardware.

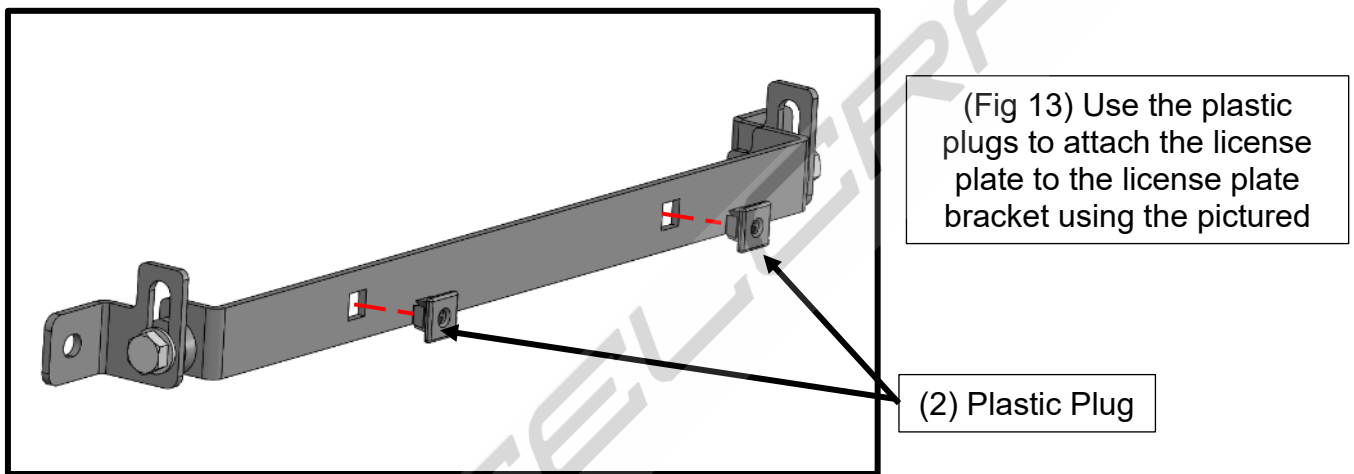
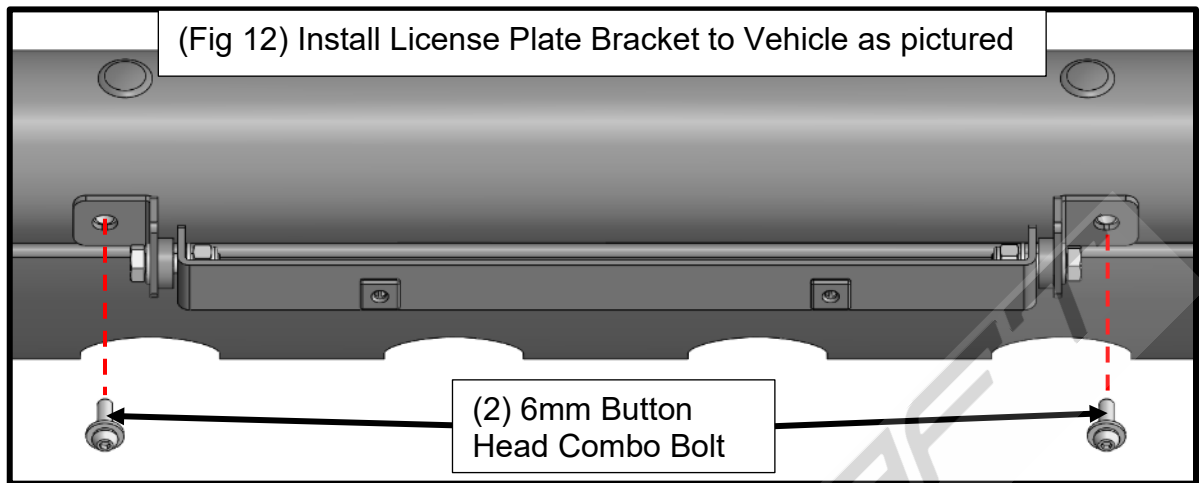


(Fig 11) Install Bull Bar to Mounting Brackets as pictured.

(2) 12mm Hex Bolt  
(4) 12mm Flat Washer  
(2) 12mm Lock Nut

3

Follow (Fig 12 – 13) to relocate the license plate.



5

Installation is now complete. Ensure that the mounting brackets are level and secured, then ensure that the Bull Bar is centered. Perform periodic inspections to the installation to make sure that all hardware is secure and tight.

